



## 2017 Annual Safety and Security Report



Covering BCOM, NMSU Las Cruces Campus and DACC Central Campus  
With Statistics from August 1, 2016 to December 31, 2016  
Release Date: September 29, 2017

## **INTRODUCTION**

This report contains information regarding safety and security programs, policies, and procedures in place at Burrell College of Osteopathic Medicine. It complies with the requirements established by 20 USC 1092, also known as the Jeanne Clery Disclosure of Campus Security Policy and Campus Crime Statistics Act, as well as the requirements imposed by the amendments to the Violence Against Women Act (VAWA). Only crime statistics from August 1, 2016 through December 31, 2016 required by this Act are included in this report as the College began classes Fall of 2016. BCOM as well as the NMSU Police Department are the agencies with primary responsibility for the collection of data for this report, though it relies on many other departments and agencies for assistance.

*NOTE: Due to the proximity as well as agreements (such as housing and facility usage for students), statistics from the Las Cruces New Mexico State University campus must be included within this report. While these numbers do not necessarily reflect reportable crimes on the BCOM campus itself, BCOM students do have access to New Mexico State University housing and facilities therefore these statistics are combined.*

# **2017 Annual Safety Report for** **Burrell College of Osteopathic Medicine**

INTRODUCTION .....	1
Section 1 – OVERVIEW .....	3
About the BCOM Campus .....	3
Public Safety Agencies associated with BCOM.....	3
Safety – Everyone’s Business.....	4
Security of Buildings and Facilities .....	4
Housing Policies.....	4
Section 2 – EMERGENCIES AND INCIDENTS.....	5
Timely Warnings and Alerts .....	6
Emergency Actions .....	7
Fire Statistics and Fire Safety Report.....	6
Missing Persons Reports .....	6
If you are the Victim of a Crime.....	7
Sexual Assault, Harassment, and Stalking .....	8
Measures taken by BCOM.....	10
BCOM Policies and Procedures .....	11
Sex Offenders .....	11
Section 3 – PROGRAMS.....	12
Safety Classes and Training .....	12
New Student Orientation .....	12
Wellness, Alcohol, and Violence Education Program.....	13
Facilities Staff & Key Control Program .....	13
Residence Hall Safety and Security Program.....	14
Counseling Center .....	15
Tips to Prevent Crime.....	15
Other Services Available.....	16
Section 4 – CRIME STATISTICS .....	17
Crime Statistics.....	17
Definitions of Clery Act Locations (General) .....	18
Clery Geography .....	19
Chart of Crime Statistics.....	20-21
Crime Log/Blotter .....	21
Tracking Crime Incidents and Reports.....	21
Off Campus Crime .....	21
We Need Your Help – Report Crime! .....	22
Responsibility for Policy Monitoring and Enforcement.....	22
Other Definitions.....	22
Section 5 – PHONE NUMBER REFERENCE GUIDE .....	23
APPENDIX – Maps of Campus Locations .....	24

# **SECTION 1 - OVERVIEW**

## **ABOUT THE COLLEGE**

The Burrell College of Osteopathic Medicine (BCOM) at New Mexico State University is one of the newest medical colleges in the United States and the only one with a mission focused on healthcare in the Southwestern United States and Northern Mexico. Although BCOM is a private and free-standing college that is not a part of New Mexico State University (NMSU), it is very closely affiliated with NMSU and our students enjoy the student life and campus community benefits that come with a major public research university.

In a unique public-private partnership, BCOM's students have access to many university facilities and services, such as athletics, intramural sports, some health services and recreational facilities. BCOM students can also utilize NMSU's housing and meal services, at an additional cost. BCOM's 80,000 square foot newly constructed building is located at the Arrowhead Research Park on the NMSU campus, adjacent to the football stadium.

## **PUBLIC SAFETY AGENCIES AFFILIATED WITH BCOM**

BCOM utilizes both the police and fire departments at NMSU. The NMSU Police Department is a highly trained and capable department that provides patrol, criminal investigation, and emergency dispatching services for the university. While most efforts are focused at the Las Cruces main campus, the department also assists the other facilities around the state in preparedness activities, crime prevention programs, and special criminal investigations. The department has enforcement authority on all property controlled by the Board of Regents throughout the state, as well as concurrent jurisdiction in some neighboring areas under mutual aide agreements.

All police officers are highly trained, certified, and have full arrest powers. All officers must complete a basic police officer academy and be certified by the New Mexico Law Enforcement Academy Board. In addition, a number have specialized training and work with other agencies in the region. Some are nationally certified handlers of explosives detection dogs, while others participate on regional response teams that investigate special crimes, as well as statewide task forces with a variety of state and federal agencies. All of this means the officers working on campus bring back a wealth of information and experience that are used to help ensure the university is on the cutting edge of safety and preparedness.

All dispatchers working in the university's Emergency Dispatch Center are also fully trained and certified by the state. They answer the 911 calls coming into the center from campus, and dispatch police, fire, and emergency medical services. In addition, the dispatchers assist the greater community by helping the other public safety dispatch centers during times of crisis.

In addition to its own police department, the university also has its own Fire and Emergency Services Department to provide fire protection and emergency medical response on the BCOM campus. A team of full-time, experienced fire professionals lead the department, but a large amount of the work is performed by student firefighters who are trained and certified as firefighters, emergency medical technicians, and even hazardous materials technicians. The Department also provides mutual aide support to the nearby fire departments when they need assistance.

While not a traditional public safety agency, the **Environmental Health & Safety Department** also works to ensure a safe environment at university facilities throughout the state. The staff provides safety training, assists with development of safety procedures, oversees laboratory safety and hazardous waste

management, assists with emergency planning and response, and a host of other functions intended to help keep the campus safe.

NMSU also maintains its own **Campus Health Center** which is fully available to BCOM students as part of their NMSU fee. The campus health center provides for the non-emergency medical needs of the community. The center has full-time medical providers, and offer X-ray, laboratory, and pharmacy services for students. They also provide travel shot services for those preparing for trips abroad, and are a partner in emergency preparedness with the New Mexico Department of Health and the Centers for Disease Control and Prevention (CDC).

### **SAFETY – EVERYONE’S BUSINESS**

A campus community relies on a peaceful, safe, and secure environment. Preserving this environment is a responsibility everyone on the BCOM campus shares. Members of the BCOM community are expected to be aware of policies and procedures of the College and to promptly report any crime or suspicious activity.

Everyone needs to also be conscious of personal safety. While the NMSU Police Department and other campus safety entities work to keep the campus safe, they cannot do so when people intentionally choose to engage in risky activity. Everyone is encouraged to be aware of their surroundings and avoid suspicious or dangerous situations whenever possible. BCOM students are also encouraged to follow common safety practices that include locking doors and windows, using seatbelts, and avoiding the over-consumption of alcohol.

### **SECURITY OF BUILDINGS AND FACILITIES**

Access to any part of the BCOM facility is managed by the office of the Asst. VP for Administration. Access to the building, classrooms and offices, are provided by a combination of electronic access control keycards and/or physical keys. Keys or electronic access is granted based on an individual’s status (e.g. staff or student) as well as job responsibilities. All keys are issued and inventoried by the Asst. VP for Administration office.

Custodial services are provided by a 3<sup>rd</sup> party contractor. All custodial staff are background and drug screened by the contractor. Ancillary contractors that may need access to the building for service or maintenance work sign in/out with the Security Office, and may be temporarily issued keys from an inventoried key locker.

### **HOUSING POLICIES**

BCOM students have both NMSU on-campus housing options as well as many off-campus options. For more information about housing policies related specifically to NMSU safety and security, please visit [housing.nmsu.edu/guide](https://housing.nmsu.edu/guide).

## **SECTION 2 – EMERGENCIES AND INCIDENTS**

### **TIMELY WARNINGS AND ALERTS**

When there are major incidents or emergencies that affect a large number of people and that present an immediate threat to health or safety, BCOM as well as NMSU will issue advisories, alerts, or warnings as appropriate and as long as doing so will not impede the public safety response or further endanger lives. An emergency alert is used when there is immediate danger, while a timely warning is used when there is an ongoing situation or crime trend that may pose a danger, but is not immediately dangerous. Advisories that are not involving an immediate danger may be sent out via e-mail or news media, while those involving immediate danger are usually sent out using the Informacast and/or NMSU Emergency Notification System (ENS). Participation in the Informacast ENS is mandatory for all students and employees at BCOM, with e-mail being the default notification. In order to receive text messages and phone calls, the student or employee must register the appropriate contact information with the IT Department. An emergency message will generally contain the following information:

**WHAT:** This is a brief description of what is taking place. For example, it may indicate there is a tornado warning, a fire, a bomb threat, or a person shooting. If the message is not an emergency (e.g., a test message), it will be indicated here.

**WHERE:** This provides information about where the emergency is taking place. It will be as specific as the particular situation allows, but should always include which campus(es) is being affected.

**ACTION:** This is where recipients will find specific guidance on what to do as a result of the emergency (e.g., be on the lookout, shelter in place, evacuate, etc.). In order to make the system work as fast as possible, these messages are necessarily kept very brief, and additional information will usually be made available via BCOM email. (NOTE: On-scene direction from public safety personnel, media releases, update e-mails, and other forms of communication may also be used as appropriate. Follow the most current and specific guidance provided.)

**Sirens:** As part of the ENS, NMSU has installed two outdoor sirens in order to provide an additional tool for notifying the public of severe weather emergencies. The sirens will only be used in those circumstances where there is extreme, immediate danger to the entire community, such as a tornado warning or large hail likely to cause injuries. Upon hearing a siren, students and employees should immediately seek shelter and then seek additional information via news media or by checking for email updates.

The final decision on whether to issue one of the above notices, and the information contained therein, rests with the College's Executive Administration and CIO. The Dean and or President may make the decision not to issue a notice if the situation is deemed not to warrant one, or if doing so might hamper the ability of public safety personnel to respond to and contain the incident. In a situation of an inclement weather closure, BCOM will follow the decision(s) of the Las Cruces NMSU campus. Any deviation from that decision must be made by BCOM's Executive Administration.

The NMSU Emergency Dispatch Center works with the Mesilla Valley Regional Dispatch Authority to monitor significant off-campus incidents. The Police Department has also asked outside law enforcement agencies to notify NMSU authorities of incidents that may warrant warnings to the NMSU and BCOM communities. However, this is not a guarantee these outside agencies will do so in every incident, nor in a timely manner. As a result, anyone believing an alert or warning is needed in a particular instance should contact the NMSU Police Department or BCOM Security.

## **EMERGENCY ACTIONS**

If you are involved in a dangerous or life-threatening emergency, take the following steps immediately:

- Get to a safe place as quickly as possible. Generally, the further you can get away from the scene, the safer you will likely be.
- Report the emergency by calling 911. Say, “This is an **EMERGENCY**”, give your **LOCATION**, and briefly tell **WHAT** is happening.
- Notify others of the danger so they can also stay away.
- Monitor the situation to see if it gets worse or if circumstances (like wind direction) change. Notify the emergency services dispatcher (911 operators) of the changes.

All students and employees are also encouraged to prepare in advance for emergencies, whether from natural disasters (such as floods, tornados, earthquakes, extreme heat, lightning, disease outbreak, etc.) or manmade incidents (including traffic crashes, hazardous chemical releases, downed electrical lines, criminal activity, terrorism, arson, etc.). The BCOM Safety and Security Team has prepared a “BCOM Emergency Guide Quick Flip-Book” which is located in the majority of spaces within BCOM. It is a good starting point for both incident specific guidelines, as well as general guidelines.

BCOM conducts fire and evacuation drills in all residence halls and randomly selected buildings each fall semester. However, students and employees should not rely on these being the only times they think about emergency evacuations. Anytime a person enters a building, they should also look to see what other avenues of emergency escape exist, whether through additional doors, designated fire exits, or even windows. Students and employees should also know where the designated escape routes and exits are in those buildings they live and/or work in, as well as any potential specific challenges (such as stairs might present for a person in a wheelchair). Newer buildings on campus also have designated “safe haven” areas where a person may call for assistance and wait for fire personnel. However, these areas are not a guarantee, and the person should continually evaluate the conditions and decide whether or not it is still safe to remain in that area.

## **FIRE STATISTICS AND FIRE SAFETY REPORT**

Statistics on fires and fire responses (other than arson), as well as the Fire Log, are managed by the NMSU Fire and Emergency Services Department. This Department also publishes the Annual Fire Safety Report, which is available on the NMSU Website.

## **MISSING PERSON REPORTS**

Any report of a missing person is immediately investigated by the NMSU Police Department. There is no 24-hour waiting period, and attempts to locate the person will include contacting surrounding law enforcement agencies, notifying the missing person’s designated contact(s), notifying parents or guardians if the missing person is less than 18 years of age, contacting known family members and friends, and posting of bulletins and news releases. In addition, the Police Department will notify appropriate BCOM officials that a person is missing.

When a BCOM student is provided a Banner ID via NMSU, they are asked to provide Emergency Contact Information, and this confidential information is used by the Police Department and BCOM Officials in contacting family and/or friends. One or more of these people may be designated as a person to contact solely for purposes of trying to find a student should they be missing. The same person, or others, may also be designated for contact in other emergencies involving the student. All students are strongly encouraged to designate and provide the names and contact information of the people they would like contacted under these circumstances. This may be done at the website <http://emergency.nmsu.edu> or through the Office of Student Affairs at BCOM.

Any BCOM employee who, through the course of their employment, is informed that a person is missing from campus is required to immediately notify the NMSU Police Department. If there is information an abduction has just taken place, the employee should call 911. Otherwise, the person should call 575-646-3311 and provide the information to the emergency services dispatcher. A police officer will then be dispatched to meet and gather additional information.

### **IF YOU ARE THE VICTIM OF A CRIME**

If you are the victim of a crime, whether while on campus or off campus, or experience a fire or medical emergency, you are encouraged to report it immediately by calling 911. For non-emergencies taking place on campus, call (575) 646-3311. When you call, give your name, the location you are calling from, a brief description of what occurred, and whether there is still a danger present (e.g., the person who committed the crime is still present). Prompt reporting and specific information will increase the chances of solving your case. A police officer will be dispatched to meet with you and obtain all of the necessary information. Here are some guidelines regarding preserving evidence while you wait for an officer:

- If evidence from the crime is still intact, try not to move or destroy it. This includes avoiding trying to clean up the area, moving or throwing away items, or wiping down surfaces.
- If there are text messages, e-mails, voice mails, or other electronic evidence, preserve the original (if possible) or make a copy (if the original might be deleted, such as with Snapchat and similar programs) and provide this evidence to the police officer who responds;
- If you are being harassed or stalked, keep a log of any contact or sightings you have of the suspect, to include any third-party contacts where the suspect uses someone else to contact you or monitor your activities;
- If you are the victim of a sexual assault, avoid showering, changing clothes, or grooming, as these can destroy evidence. Protect any bedding or towels, clothes you were wearing, or other items where evidence may have been left. If possible, avoid the use of the bathroom, and consider getting a SANE Exam (described below) as soon as possible to identify and collect evidence that may be on your body. The first few hours are the most critical, but useful evidence can still be obtained 24 hours or more after some sexual assaults.
- If you chose to not report the crime immediately to police, you are still encouraged to write down as much as you can remember (when you are able to) so that if you decide to report at a later time, you will have something to remind you of critical details. Try to include as many details about what happened, as well as everything you can remember about the suspect. Include things you saw, heard, and even smelled, tasted, or felt. Also try to write down things like other people who were around and might be witnesses, locations where different things happened, and

Even if you do not wish to file a police report right away, you may wish to preserve evidence using the above steps in case you later decide to contact police. This can help protect evidence that might assist later in the identification and/or prosecution of the person responsible for the crime. This can also preserve evidence you might want to use during an administrative hearing or civil lawsuit, should you choose either of those options.



Many students worry about reporting crimes to the police because they do not want to testify in a trial. Victims are nevertheless encouraged to at least contact the Las Cruces or the NMSU Police Department(s) so they can be made aware of other services (counseling services, medical treatment, etc.) that might lessen the trauma of the incident. If the victim does not wish to pursue criminal charges, their wishes will be respected. Some of the most frequently accessed services include:

- **SANE Exam:** This is available through the La Piñon Rape Crisis Center, and is a medical exam that is designed to identify damage to your body as a result of a sexual assault so it can be treated. In addition, evidence of sexual assault can be identified and collected during this exam. These exams are confidential, and are conducted by specially trained medical practitioners. You also have a right to have someone of your choosing with you during these exams. If you would like, a victim services advocate can accompany you and help with any questions you might have.
- **Counseling:** This service is available for students through the NMSU Counseling Center and the BCOM Health and Wellness Counselor located in the Office of Student Affairs, as well as a number of off-campus entities. Neither BCOM or the NMSU Counseling Center issues a charge to students for services, and all services are confidential.
- **Medical:** In addition to the SANE exam, medical services are available on campus through the Campus Health Center. In addition, there are two medical centers in Las Cruces, and a large number of urgent care centers and clinics in the area. The medical centers have 24-hour emergency departments, and many of the urgent care centers and clinics have hours that extend into the evenings and on weekends.
- **Protection Orders:** While certain BCOM officials can issue a “no contact” order against students or employees, such orders only apply on campus, and may only be helpful if the perpetrator of the crime is a student or employee. The NMSU Police Department’s Victim Services staff can assist victims of violence in obtaining temporary and permanent restraining orders from the state courts that will apply no matter where you might be, and no matter who the offender is. Victim services units with other police departments offer similar assistance.
- **Victim Services:** This is a unit that operates out of the NMSU Police Department, and is staffed with a coordinator and advocates who can assist with connecting to any of the above resources, making housing changes, getting protective orders through the courts, obtaining emergency food and shelter, etc. As mentioned above, victims do not need to file a police report in order to receive assistance from the Victim Services unit.

Any BCOM employees who are approached by a person who has been the victim of a sexual assault or other crime on either the BCOM or NMSU campus are required to assist the person in notifying the police department.

### **SEXUAL ASSAULT, HARASSMENT, AND STALKING**

The issue of sexual assault and other sexual misconduct is at the forefront of universities nationwide. BCOM specifically prohibits sexual misconduct and will assist victims in seeking counseling (available either through the NMSU Counseling Center, BCOM, or several off-campus organizations), obtaining medical treatment (available through the Campus Health Center and local hospitals), changing room assignments, making academic changes, and in any other way possible, including criminal prosecution through the District Attorney’s Office (if the victim so desires). Students, faculty and staff, and visitors are reminded that they can contact the NMSU Police Department for assistance at any time, and do not have to file an official police report in order to be helped. If a report is filed with the NMSU Police Department, it will be fully investigated with the findings being referred to the District Attorney’s Office for prosecutorial decisions. (NOTE: The state statutes related to sexual assault, harassment, stalking, and other crimes can be found in Section 4 of this publication.)

BCOM prohibits sexual misconduct by students and employees. This includes **forced sexual contact** (including harmful, insulting, or non-consensual verbal or physical contact of a sexual nature with another person, such as touching, fondling, exposure, disrobing, etc.) and **forced sexual penetration** (including intercourse, sodomy, oral copulation, or penetration with any object by the use of force, threats, coercion, or by taking advantage of a victim's helplessness). Also prohibited is any sexual harassment, such as requiring a person to engage in sexual conduct or activities in exchange for a grade, payment, or similar benefits.

BCOM requires all employees and students to complete training on an annual basis regarding sexual misconduct. Additional information and training programs beyond this initial training are available through the NMSU Counseling Center, the BCOM Health and Wellness Counselor in the Office of Student Affairs, the Title IX Coordinator, and the NMSU Police Department. Contact information for each of these can be found near the end of this publication.

NMSU investigates reported sexual misconduct (including dating violence, domestic violence, sexual assault, and stalking) through the Title IX Coordinator (the disciplinary investigation), as well as through the appropriate law enforcement agencies (the criminal investigation). During the NMSU disciplinary investigations, a preponderance of the evidence standard is used. During disciplinary proceedings, both the victim and the accused have the right to have another person present, including the opportunity to be accompanied to any related meeting or proceeding by an advisor of the person's choice. The findings of Title IX disciplinary investigations will be sent to the President's Office to determine if violations have taken place, and if so, then referred to The Student Ethics and Honor Committee (for students) or Human Resources (for employees) for appropriate action to be taken based on the circumstances of the individual incident. For students, this can result in any of the following sanctions based on the severity of the offense: expulsion from NMSU housing; mandatory completion of an education program; completion of mandatory counseling; suspension; or dismissal and ban from both the BCOM and NMSU campuses. For employees, the possible sanctions are: documented counseling (for minor offenses); written reprimand (for minor offenses); suspension; or termination.

More information regarding student misconduct and hearing procedures can be found at:  
[BCOM Misconduct and Hearing Procedures](#)

Sexual misconduct often overlaps with crimes of sexual assault, sexual harassment, stalking, dating violence and domestic violence. As a result, sexual misconduct cases may be handled both by BCOM for policy violations, as well as by law enforcement for criminal violations. Each system has its own processes and standards. In addition, there are differences between federal definitions used to report violations of college policies, and state statutes used to prosecute offenders in the criminal justice system.

In an effort to reduce the risk of sexual misconduct as well as the crimes of rape, sexual assault, sexual harassment, stalking, dating violence and domestic violence occurring among its students, the College utilizes a range of training and initiatives to provide awareness, educational, risk reduction and prevention programming. Educational programs are offered to raise awareness for all incoming students and employees, and are conducted during new student and new employee orientation and throughout an incoming student's first semester. These programs and others offered throughout the year include strong messages regarding not just awareness, but also primary prevention (including normative messaging, environmental management and bystander intervention), and discuss institutional policies on sexual misconduct as well as the State of New Mexico definitions of domestic

violence, sexual assault, stalking and consent in reference to sexual activity. Bystander engagement is encouraged through safe and positive intervention techniques and by empowering third-party intervention and prevention such as calling for help, identifying allies, and/or creating distractions.

### **MEASURES TAKEN BY BCOM**

In the event that sexual misconduct, gender-based violence or the crimes of sexual assault, stalking, dating violence or domestic violence occur, the College takes the matter very seriously. The NMSU Police Department investigates all crimes reported to have taken place on the BCOM, Las Cruces and DACC Espina campuses, including crimes involving these categories. However, students can also file (or file in lieu of a criminal report) an administrative report/complaint with the College for incidents involving dating violence, domestic violence, sexual assault, or stalking by contacting the Title IX Coordinator, Vanessa Richardson at (575) 674-2396. When a report comes in regarding dating violence, domestic violence, sexual assault or stalking, it is reviewed to determine if the incident recorded is or could be a violation of Title IX. If a violation of Title IX is possible, the complaint is investigated. At the conclusion of the investigation, a Finding of Facts is written and submitted to Office of the President and CAO to determine the next course of action.

If it is determined that a violation occurred and the respondent is a student, the student has a right to a hearing. Both the accuser and accused are allowed to have someone present with them at any meeting, investigation, or hearing related to the incident. The accused and accuser receive a copy of these rights when they attend a meeting (separately) to discuss how the conduct process works.

The College may employ interim protection measures such as interim suspension and/or no contact orders in any case where a student's or employee's behavior represents a risk of violence, threat, pattern or predation. A student wishing to officially report such an incident to BCOM may do so by contacting the Title IX Coordinator, Vanessa Richardson at (575) 674-2396. The student may also report to NMSU Police or other law enforcement if they wish to pursue criminal charges. NMSU employees with knowledge about sexual misconduct or gender-based violence or the crimes of rape, sexual assault, sexual harassment, stalking, dating violence or domestic violence are encouraged to report it immediately.

For offenses including sexual misconduct or other gender based violence, which typically include the crimes of domestic violence, dating violence, sexual harassment, sexual misconduct and stalking, sanctions against student offenders range from warnings through expulsion. Serious and violent incidents and acts of sexual offenses by employees usually result in suspension, expulsion or termination of employment.

Procedurally, if the NMSU Police Department were to receive a report of sexual misconduct, gender-based violence, or other sex or gender discrimination the BCOM Title IX Coordinator will be notified. If the victim wishes to access local community agencies and/or law enforcement for support, the College will assist the victim in making these contacts. The Title IX Coordinator will offer assistance to victims in the form of interim or long-term measures such as opportunities for academic accommodations, changes in housing at NMSU, for the victim or the responding student, campus escorts, transportation assistance, targeted interventions, etc.). If the victim so desires, they will be connected with a counselor on- or off-campus, as well as an on- or off-campus victim's advocate. No victim is required to take advantage of these services and resources, but the College will provide them in the hopes of offering help and support without condition or qualification. A summary of rights, options, supports and procedures is provided to all victims, whether they are a student, employee, guest or visitor by the Title IX Coordinator (or designee).

In any complaint of sexual misconduct, sexual assault, stalking, dating violence, domestic violence or other sex or gender-based discrimination covered under the federal law, Title IX, the person bringing the accusation and the responding party are entitled to the same opportunities for a support person or advisor of their choice throughout the process, including any meeting, conference, hearing or other procedural action. Once complete, the parties will be informed, in writing, of the outcome, including the finding, the sanctions (if any). Delivery of this outcome will be issued to the parties, and will occur at the same time and utilizing the same method of delivery. All parties will be informed of the College's appeal processes, and their rights to exercise a request for appeal. Should any change in outcome occur prior to finalization, all parties will be timely informed in writing, and will be notified when the results of the resolution process become final.

### **BCOM POLICIES AND PROCEDURES**

Policies and Procedures related to discrimination, sexual misconduct, harassment, alcohol, drugs, and related topics may be found on the BCOM website at [Policies and Procedures](#).

### **SEX OFFENDERS**

In accordance to the Campus Sex Crimes Prevention Act of 2000, the College is providing a link to the State of New Mexico Sex Offender Registry. All sex offenders are required to register in the state of New Mexico and to provide notice of each institution of higher education in New Mexico at which the person is employed, carries a vocation or is a student. The registry, maintained by the State of New Mexico can be found at <http://www.nmsexoffender.dps.state.nm.us>. In addition to other legal requirements, any convicted sex offender who is a student or employee of NMSU is required to register with the NMSU Police Department, as well as make notification to either the Registrar's Office (if a student) or the department head of their employing department (if an employee), or both (if both a student and an employee). As of September 30, 2017, no known sex offenders lived on the NMSU campus based on a search of this database.

In addition to the above notice to the State of New Mexico, all sex offenders are required to deliver written notice of their status as a sex offender to the NMSU Police Department no later than three (3) business days **prior to** their enrollment in, employment with, volunteering at or residence in the University. Such notification may be disseminated by the University to, and for the safety and well-being of, the University community, and may be considered by the University for enrollment and discipline purposes.

## **SECTION 3 – SAFETY AND SECURITY PROGRAMS**

### **SAFETY CLASSES AND TRAINING**

The primary functions of the NMSU Police Department are law enforcement, criminal investigation, and emergency response. Integral to these are the crime prevention and public education classes and workshops the officers and crime prevention specialists teach on campus each year to help reduce the likelihood of crimes. All of the workshops listed below are available to BCOM students. These classes include:

- **Personal Self Defense and Fight Like A Girl:** learn and practice techniques that can help stop an attack in these programs
- **Pepper Spray:** learn to use pepper sprays for self defense
- **Active Shooter Response:** learn what to do if caught in an active shooter/killer incident
- **Traffic Safety Issues:** refresh on the rules of the road and how to avoid problems
- **Rape Awareness & Prevention:** learn about stranger, date, and acquaintance rape, and some ways to avoid situations common to rapes
- **Alcohol & Drug Awareness:** learn the effects of alcohol and drugs on the body, and the dangers they can pose
- **Dealing with Difficult People and Violence in the Workplace:** learn about the causes of workplace violence and how to reduce its likelihood
- **Emergency Preparedness and Community Emergency Response Team (CERT):** learn how to prepare for emergencies, help yourself, and help others
- **First Aid & CPR:** learn how to treat medical emergencies until help arrives

Classes are scheduled at the request of any on-campus (and some off-campus) groups or organizations. In addition, the Police Department works with others on campus, such as Housing and Residence Life, to design specific public education workshops for the needs of each area. The NMSU Police Department also teaches segments of academic courses at the request of instructors and faculty. Courses are tailored for each audience, and range in length from 15 minutes to 8 hours. Further information, including a list of currently scheduled courses, how to request a course, descriptions of the courses, or discussion of specific needs is available by contacting the NMSU Police Department at 646-3311. Additional information regarding safety can also be found at [www.nmsupolice.com](http://www.nmsupolice.com) and [safety.nmsu.edu](http://safety.nmsu.edu), as well as by following the NMSU Police Department Facebook and Twitter accounts (<http://facebook.com/nmsupolice> and <http://twitter.com/nmsupolice>).

### **NEW STUDENT ORIENTATION**

The Office of Student Affairs, faculty and staff present during orientation week regarding the Student Code of Conduct and Ethics; Title IX; where a victim can report on campus providing an explanation of reporting offices and offices which hold confidentiality; steps to take in case of a crime of violence; and bystander behavior.

All BCOM students must complete an on-line Title IX Training. A component of the on-line training is information related to defining dating violence, domestic violence, sexual assault, stalking and consent; rights of the victim; where a victim can report on campus providing an explanation of reporting offices and offices which hold confidentiality; steps to take in case of a crime of violence; and bystander behavior.

Wellness, Alcohol, Violence, Education (W.A.V.E.) sets up display tables and does presentations throughout the year at NMSU and BCOM students have access to this information. They provide information on alcohol, violence, and wellness for students.

#### **WELLNESS, ALCOHOL, VIOLENCE, EDUCATION (WAVE) PROGRAM**

WAVE is a harm-reduction program that has run at NMSU for a number of years. It involves peer educators in outreach efforts targeting students. At each presentation, WAVE provides materials regarding on and off-campus resources to participants.

- 1) **RAINN Day** - an annual day of action to raise awareness and educate students about sexual violence on college campuses. It is a grassroots program designed to empower college students to educate their peers about risk reduction and recovery resources on their campus.
- 2) **Aggies Against Violence Week** – This is an annual event where students are provided resources on preventing campus violence.
- 3) **Take Back The Night** – This an international event and non-profit organization with the mission of ending sexual, relationship, and domestic violence in all forms. NMSU participates in this even annually.

#### **FACILITIES STAFF AND KEY CONTROL PROGRAMS**

The BCOM campus is comprised of a single building. Several systems and protocols are in place to make the campus as safe as possible for students and staff.

- 1) All students and staff are issued photo ID badges and are required to wear them visibly when in the building.
- 2) All entrances to the building are under electronic access control. Students and staff have access to the building beyond the typical public hours, based on the access granted via their key card credentials. All uses of keycards are monitored and recorded. Individual cards can be immediately locked out if lost or misplaced.
- 3) Student access hours vary, but typically end at midnight on weekdays and 10:00pm weekends. Anytime the building is open to students, there is a NM licensed security officer on duty. Security services are provided by a 3<sup>rd</sup> party contractor. The security officer is responsible for clearing and securing the building after hours.
- 4) The building is typically open to the public from 8:00 am to 5:00 pm on weekdays. During these hours, entrances open to the public are monitored by security personnel. All visitors are required to sign in and out, are provided with temporary badges, and typically escorted to the areas they are visiting.
- 5) Internal building access to offices, classrooms, and laboratories is controlled through a combination of physical keys and electronic key card access. Keycard access hours and location vary by individual.
- 6) There is an extensive network of security cameras which record activities 24 x 7 for both interior and exterior building areas. Access to this system is restricted to appropriate staff and security personnel. The system is primarily designed for forensic analysis after the fact.
- 7) A public address system provides the capability for emergency announcements thought the building and office areas.

## **RESIDENCE HALL SAFETY AND SECURITY PROGRAMS**

### **Residence Life On-Call System**

Housing and Residential Life have a comprehensive on-call duty rotation at both the student staff member (Resident Assistant) and professional staff member (Resident Director) level. These staff are “on-call” to respond to personal crisis, major facilities issues, or medical emergencies. After business hours (5pm-8am the following morning), a student staff member is on duty for each residential facility via a university-owned cellular phone.

The professional Resident Director on duty is responsible for all housing complexes and available 24/7, not just during the after-hours time period. This professional staff member is supported by a member of the Housing Leadership Team (Director or Associate Directors) who is available 24/7 to consult with the professional staff member that is available on campus. Professional staff members are on-call every day of the year, even when the university is closed and/or on recognized holidays.

As a part of the Resident Assistant duty protocol, staff complete a nightly inspection of all exterior doors to each building to insure that they are securing and functioning properly, and then Housing has administrative staff do a weekly double check of these doors to insure all exterior gates and doors are latching and closing appropriately.

In addition to exterior door inspections, each evening we do a visual walk through of all housing spaces and we have created a process to report all exterior lights that are not functioning that is documented on duty rounds. This includes frequent rounds each month at Student Family Housing for reporting yard and street lights not working.

### **Public Safety Aides (PSAs)**

In collaboration with the NMSU Police department, student Public Safety Aides (trained security officers) patrol all housing areas, Corbett Center Student Union (CCSU), and adjacent parking lots on Wednesdays, Thursdays, Fridays, and Saturdays from 10 pm to 3 am. Housing and Residential Life and CCSU initiated this safety program in late 2015, and are paying for it to reduce the number of issues, including false fire alarm pulls, which were happening late at night and in the early parts of the morning. This has helped to significantly reduce problems, and has helped assist students who had health emergencies during this time period. Overall, the program has been a terrific initiative to benefit student health, safety, and security.

### **Housing Health & Safety Checks**

Housing staff conduct health and safety checks at all facilities in the Housing inventory five times each year: late September (pre-Homecoming); November; winter Break (December); February; and, April. While this is an ideal time to connect with residents, assist with work order issues and check on our condition of the space, Housing staff also specifically look at areas that relate to safety:

- check and insure all window locks are in place and functioning
- check and insure all exterior door locks to space are functioning
- check and insure all smoke detectors are in place and operating correctly

In September 2016, Housing staff used these checks as in-person meetings with each resident in the hall or apartment. Staff also discussed on how to sign up for the emergency notification system, and will do that each Fall to help get as many students, especially first year students, to enter additional contact information into the system.

### **Additional Housing Safety and Security Measures**

All exterior gates and doors contain signage about the seriousness of not propping doors, and that community safety is something where all residents/community members bear responsibility. Housing and Residential Life also conducts a monthly check of all exterior gates and doors to ensure educational signs are in place.

Additionally, Residential Life staff at each of the Operations Centers complete daily checks of all spare key cabinets, and twice per week a complete inventory of all key cabinets is conducted to identify and address any spare keys that have been checked out more than 24 hours and get those returned by residents. Housing and Residential Life also complies with the NMSU Fire Chief Compliance Statement and schedule for testing and inspection of Fire Alarm and Fire Suppression equipment across the NMSU System. This testing currently includes biannual testing of fire alarm systems in large residential buildings. This is supplemented with practice fire drills each Fall in all residential areas.

### **BCOM COUNSELING CENTER**

BCOM offers counseling services free of charge to students at the Office of Student Affairs. BCOM employs a well-credentialed part time Health and Wellness Counselor that can help students with a wide range of issues. Students interested can schedule an appointment with the BCOM Health and Wellness Counselor at 575-993-5720. When a victim of sexual assault, harassment, dating violence or domestic violence come to BCOM counseling services, the student receives materials to take away with them after the visit. The materials include contact information to both campus and community resources. On campus resources include: the NMSU Campus Health Center, BCOM Office of Compliance, NMSU Housing & Residential Life; NMSU Pete's Pick Up', NMSU Police, 7Cups Online emotional support system, and NMSU Wellness, Alcohol Violence and Education (W.A.V.E.). Community resources include: La Casa Domestic Violence Shelter, La Piñon Rape Crisis Center, Las Cruces Police Department, Memorial Medical Center, Mountain View Regional Medical Center and the Doña Ana County Sheriff's Office's Victim Assistance Unit. The victim is given phone numbers and addresses of these services and offered assistance with reaching these services.

### **TIPS TO PREVENT CRIME**

The following are some things each person can do to reduce chances of becoming a victim of a crime:

- Mark or engrave all valuables (including textbooks), and keep a record of these in a safe place. Include their make, model, and serial numbers whenever possible.
- If there are problems with your room that may affect security (such as doors that don't lock well or windows that open easily), let your RA or property manager know immediately.
- Register your bicycle with the NMSU Police Department and always secure it to a bike rack on campus with a quality lock.
- Lock the doors and windows to your room and your vehicle every time you leave. Do not leave valuables where they can be easily seen by someone passing by, even if it is just for a few minutes.
- Always be aware of your surroundings and of any strangers near you. If you are going to be involved in activities where you are unable to focus on your environment and what is going on around you (e.g., when playing games on a smart phone), do so with friends so you can help each other watch for dangerous situations. If someone is acting suspiciously near you, move away toward large groups and well lit areas. If the person follows you and/or continues to act in a suspicious manner, consider challenging them or call 911 for assistance.
- Don't leave valuables unattended in unlocked lockers, study areas, or classrooms.



- Alcohol and drug use can reduce your ability to recognize a dangerous situation and your ability to defend yourself. If you are going to drink alcohol, do it legally, responsibly, in a safe place, and with people you can trust.

In addition to the tips above, additional information can be found on the NMSU Police Department website ([www.nmsupolice.com](http://www.nmsupolice.com)), or by contacting the Crime Prevention Office at 575-646-3311.

#### **OTHER SERVICES AVAILABLE**

Students seeking counseling services off campus may obtain a list of the services available and their phone numbers by contacting BCOM's Health and Wellness Counselor within the Office of Student Affairs. The Office of Student Affairs can put students in touch with the La Piñon Rape Crisis Center, La Casa Shelter, Doña Ana Victims' Assistance, and numerous other public and private counseling services. Many of these are free of charge or are offered on a sliding fee scale.

For education about sexual assault and misconduct, policy development, and victims' assistance issues, BCOM students should contact the Title IX Coordinator, Office of Student Affairs or the Associate Dean of Students. Students with concerns or needing specific information are encouraged to contact the Associate Dean of Students. BCOM and NMSU work specifically toward the goal of reducing the incidence of sexual crimes and providing better services for those victimized. Special assistance for victims in changing academic and living arrangements are available through the Associate Dean of Students.

Additional services exist throughout the community to deal with special problems. Students may contact the Office of Student Affairs with their needs for referral to the appropriate people or organizations.

## **SECTION 4 – CRIME STATISTICS**

### **CRIME STATISTICS FROM AUGUST 1<sup>ST</sup> 2016 TO DECEMBER 31<sup>ST</sup> 2016**

BCOM Administration, faculty and staff as well as the NMSU Police Department strongly discourage any conduct that is illegal or that violates the rights of another individual. This specifically includes laws concerning possession, use, and sale of alcohol and illegal drugs. BCOM may take both administrative (student judicial and/or personnel) and criminal action against individuals and organizations found to be violating federal, state or BCOM policies regarding alcohol or drugs. Various drug or alcohol abuse education programs are sponsored by NMSU's Police Department, the WAVE program, and BCOM's Office of Human Resources. The NMSU Police Department makes every effort to assist victims of crimes through the Police Department's Victim Services Office and to prosecute those responsible.

The NMSU Police Department is responsible for the investigation of all crimes that take place on university premises which includes BCOM. This includes the filing of appropriate police reports and filing of annual reports and statistics. However, other agencies have concurrent jurisdiction in many cases. The NMSU Police Department takes efforts to encourage any other agency taking a report to notify the university so the incident can be reflected in the annual crime reports. While there has been a history of excellent cooperation and data sharing among local law enforcement agencies in Doña Ana County, the cooperation from federal agencies in sharing this type of data is not as strong, due in large part to secrecy requirements by those agencies. However, as these agencies generally do not investigate crimes reported herein, this data is believed to be complete.

BCOM and NMSU Police will only consider removing a report as "unfounded" if the person who filed the report makes a written statement acknowledging that the initial report was fictitious, or if a court convicts the person for filing a false report. In all other circumstances, a report will still be included on crime statistics regardless of the result of hearings or trials.

Statistics on the following crimes and offenses are reported in the annual security report:

**Criminal Homicide:** Murder, non-negligent, and negligent manslaughter. Murder/non-negligent manslaughter is the willful (non-negligent) killing of one human being by another. Negligent manslaughter is the killing of another person through gross negligence.

**Sex Offenses, Forcible or Non-forcible:** A forcible sex offense is any sexual act directed against another person, forcibly and/or against that person's will; or not forcibly or against that person's will where the victim is incapable of giving consent. Non-forcible sex offenses are acts of unlawful, non-forcible sexual intercourse. While the crimes of rape, incest, and statutory rape have been included in this area for many years, changes in the definitions used in the Clery Act now that went into effect on March 1, 2014 now also include fondling.

**Domestic Violence and Dating Violence:** Starting with statistics for 2013, these categories have been added to this report. However, they were already tracked for many years prior pursuant to state law. It is important to note that "dating violence" is considered domestic violence under state law, and is prosecuted as such. However, for purposes of this report, effort has been made to distinguish between these two categories in accordance with the federal definitions.

**Stalking:** Engaging in a pattern of conduct directed at a specific person and that would cause a reasonable person to be in fear of their own or another's safety, or that would create substantial emotional distress. Harassment that continues to occur might become stalking.

**Robbery:** The taking, or attempting to take anything of value from the care, custody or control of a person or persons by force or threat of force or violence and/or by putting the victim in fear.

**Aggravated Assault:** The unlawful attack by one person upon another for the purpose of inflicting severe or aggravated bodily injury. This offense is usually accompanied by the use of a weapon or by means likely to produce death or great bodily harm.

**Burglary:** The unlawful entry of a structure with the intent to commit a felony or theft.

**Arson:** Willful or malicious burning or attempt to burn with or without intent to defraud a dwelling house, public building, motor vehicle or aircraft, or personal property of another, etc.

**Motor Vehicle Theft:** The theft or attempted theft of a motor vehicle. There are three classes of motor vehicles: (1) autos, (2) trucks and buses, (3) and other vehicles.

**On-campus Arrests for Alcohol, Drug and Illegal Weapon Violations:** These represent arrests or formal charges by police related to either alcohol, illicit drugs, or illegal weapons on campus.

**Referrals for Campus Disciplinary Actions for alcohol, drug or illegal weapon violations:** These statistics are individuals referred for disciplinary proceedings in the Dean of Students Office or Residence Life & Student Housing. These individuals may also be counted in the On-campus Arrests category, as individuals are often both prosecuted criminally as well as referred for disciplinary proceedings.

**Hate Crimes:** Hate crimes are reported by category of prejudice: race, religion, gender, gender identity, sexual orientation, ethnicity, national origin or disability. The hate crimes include the following offenses: murder, rape, larceny/theft, assault, intimidation, property destruction, damage or vandalism.

#### **DEFINITIONS OF CLERY ACT LOCATIONS (General)**

**“On-Campus”** is defined as any building or property owned or controlled by an institution within the same reasonably contiguous geographic area and used by the institution in direct support of, or in a manner related to, the institution’s educational purposes, including residence halls. This also includes any building or property that is within or reasonably contiguous to the geographic area that is owned by the institution but controlled by another person, is frequently used by students, and supports institutional purposes (such as a food or other retail vendor).

**“Dorms/Residential Facilities”** for students on campus is a **subset** of the **“On-Campus”** category.

**\*\* Crimes reported in the Residential Facilities column are also included in the On-Campus Category.**

**“Non-Campus”** is defined as any building or property owned or controlled by an institution that is used in direct support of, or in relation to, the institution’s educational purposes, is frequently used by students, and is not within the same reasonably contiguous geographic area of the institution. This also includes any building or property owned or controlled by a student organization that is officially recognized by the institution. The Santa Fe facility is considered in this category.

**“Public Property”** is defined as all public property, including thoroughfares, streets, sidewalks, and parking facilities, that is within the campus, or immediately adjacent to and accessible from the campus.

## **CLERY GEOGRAPHY**

As noted at the beginning, NMSU is one of the largest land grant universities in the nation. BCOM is located on NMSU property. This means that there is a lot of property controlled by the NMSU. This report does not cover all campuses, only those listed below as well as BCOM.

**The Burrell College of Osteopathic Medicine:** Located at 3501 Arrowhead Drive, BCOM is a private and free-standing college that is not part of NMSU but is very closely affiliated with the University and our students have full access to the NMSU campus including housing.

**Las Cruces Campus:** The land located south of University Avenue, between Interstate 10 and Interstate 25, forming a triangle between the three (as the Interstates join on the southern boundary), excluding the Las Cruces Convention Center. Also included is the land owned by NMSU that extends west from Interstate 25 and south of University Avenue/Dripping Springs Road, reaching up the western face of “A” Mountain, and extending south for a little over a mile just past the intersection of Tellbrook Road and Sonoma Ranch Boulevard.

**Doña Ana Community College – Espina Campus:** Originally called the DACC “central campus”, this is located on the Las Cruces Campus, on the southwest side of the intersection of Gregg Street (which forms the north border) and Espina Street (forming the east border). It is bordered on the south by Wells Street, and on the west by Sam Steel Way.

**Fabian Garcia Horticulture Center:** This land is located immediately west of Interstate 10, straddling University Avenue. Most of this area is not fenced, but only crimes taking place within the university property are included in this report.

**Horse Farm:** Located on Union Avenue, this land consists of completely fenced pastures and paddocks, as well as some equipment barns, a horse barn, and a landscaped approach immediately adjacent to the street. Only crimes located south of Union Avenue and within the described area are included in this report.

**Leyendecker Research Facility:** This research property is located on the east side of the Rio Grande River, south of the Town of Mesilla.

**Chihuahuan Desert Rangeland Research Center (CDRRC):** This is a large, working research ranch located north of Las Cruces, and partially straddling the Doña Ana Mountains on the southern side, and extending to the Rio Grande River on the west and Jornada Experimental Station operated by the USDA on the east. Interstate 25, a rest area, and a US Border Patrol Checkpoint are located in a corridor running north/south through the CDRRC, but are not part of the NMSU land nor are they included in this report.

Crime statistics from August 1<sup>st</sup> 2016 to December 31<sup>st</sup> 2016:

	Offense	Year	On-Campus Property	**Residential Facilities	On-Campus Total	Non-Campus Property	Public Property
MURDER	<i>Murder/Non-Negligent Manslaughter</i>	2016	0	0	0	0	0
	<i>Negligent Manslaughter</i>	2016	0	0	0	0	0
SEXUAL ASSAULTS/CRIMES	<i>Sex Offenses, Forcible</i>	2016	7	5	7	0	0
	<i>Sex Offenses, Non-Forcible (statutory rape)</i>	2016	0	0	0	0	0
	<i>Fondling</i>	2016	6	0	6	0	0
	<i>Incest</i>	2016	0	0	0	0	0
OTHER TITLE IX CRIMES	<i>Domestic Violence</i>	2016	6	5	6	0	0
	<i>* Dating Violence</i>	2016	*	*	*	*	*
	<i>Stalking</i>	2016	1	0	1	0	0
OTHER CLERY-REPORTED CRIMES	<i>Robbery</i>	2016	3	0	3	0	0
	<i>Aggravated Assault</i>	2016	3	1	3	0	0
	<i>Burglary</i>	2016	10	8	10	1	0
	<i>Motor Vehicle Theft</i>	2016	5	0	5	0	0
	<i>Arson</i>	2016	0	0	0	0	0

\* Pursuant to the 34 CFR 668.46(a) Definitions, and the Federal Register, Volume 79, No. 202, page 62757, Column 3, NMSU includes all cases of 'dating violence' in the statistics for 'domestic violence', as New Mexico State Statutes already include dating violence in domestic violence violations and prosecutions. As a result, there are no cases of 'dating violence' listed individually

\*\* The NMSU controlled residential facilities are all located on campus, so the incidents taking place therein are also included in the "On-Campus Property" column.  
Hate Crimes 2016: 0

ARRESTS	TYPE	Year	On-Campus Property	**Residential Facilities	On-Campus Total	Non-Campus Property	Public Property
	<i>Weapons: Carrying, Possession, Etc.</i>	2016	3	2	3	0	0
	<i>Drug Abuse Violations</i>	2016	31	17	31	0	3
	<i>Liquor Law Violations</i>	2016	52	20	52	0	1
REFERRAL	TYPE	Year	On-Campus Property	**Residential Facilities	On-Campus Total	Non-Campus Property	Public Property
	<i>Weapons: Carrying, Possession, Etc.</i>	2016	0	0	0	0	0
	<i>Drug Abuse Violations</i>	2016	3	1	3	0	0
	<i>Liquor Law Violations</i>	2016	44	35	44	0	0

#### **CRIME LOG/BLOTTER AND INCIDENT REPORTS**

The NMSU Police Department follows openness in its records. The records can be viewed during normal business hours (Monday through Friday, 8 am – 5 pm, excluding holidays or posted closures) at the Police Department Records Office. They are available in the form of a log/listing, as well as individual reports. These should not be considered official police reports for purposes of insurance or prosecution. Anyone needing stamped, official police reports must purchase them from the Records and Evidence Office.

#### **TRACKING CRIME INCIDENTS AND REPORTS**

People interested in the activities of the NMSU Police Department can find regular news reports on local radio and television stations, as well as articles in the local newspapers. The Round Up student newspaper also publishes stories on recent police reports taken by the NMSU Police Department. The NMSU Police Department experiences a high degree of cooperation from the local news media and issues press releases on cases believed to be of public interest. As noted above, the crime log and individual police reports may be viewed at the NMSU Police Department Records Office. The Police Department also submits its crime statistics to the U.S. Department of Justice's Uniform Crime Reports.

#### **OFF-CAMPUS CRIME**

Crime occurring off campus involving students or chartered BCOM organizations is reported to and handled by a variety of agencies, including the Las Cruces Police Department, the Doña Ana County Sheriff's Department, or other local, state, or federal law enforcement agencies having jurisdiction. While the NMSU Police Department assists other agencies when asked pursuant to mutual aid agreements, the reporting and tracking of crime is done by the agency of primary jurisdiction. BCOM nor NMSU monitors or tracks incidents that are on private property or public property not owned by BCOM or NMSU. Anyone wanting specific information on off-campus crime should contact the appropriate agency(s). See the Phone Number Reference Guide on the last page of this report for contact information.

### **WE NEED YOUR HELP – REPORT CRIME!**

Please help us in deterring crime on our campus by promptly notifying BCOM security or by calling the NMSU Police Department at 575-646-3311 or 911 (in case of emergencies) to report suspicious activity, safety problems, or crimes. In accordance with state law, the NMSU Police Department cannot accept anonymous reports, and must disclose certain information to prosecutors and defense counsel. However, it will take steps in sensitive cases to keep personal information confidential to the extent possible. This includes cases of sexual assault, as well as cases where there is a concern of possible retaliation. The NMSU Police Department also encourages 3<sup>rd</sup> party reports from non-NMSU counselors, pastors, and other mental health practitioners and anyone a BCOM who may hold these roles.

### **RESPONSIBILITY FOR POLICY MONITORING AND ENFORCEMENT**

BCOM has assigned responsibility for monitoring safety and security policies to the appropriate offices and agencies. If violations of policy are found to have occurred, the violations are referred to the appropriate offices for enforcement.

### **OTHER DEFINITIONS**

The following are additional terms that are used in various places in this Report.

**Awareness Program:** An educational program delivered either in person or online that makes a person familiar with material surrounding a particular topic (in this case, sexual assault, domestic violence, dating violence, and stalking); should be culturally relevant and inclusive of all individuals and groups.

**Bystander Intervention:** Measures that can be taken by someone (other than the victim) to interrupt or discourage the actions of another that might be leading toward sexual assault, domestic violence, dating violence, or stalking; the measures may, but do not necessarily need to, include calling 911.

**Consent:** Knowingly and willingly agreeing to something; affirmative consent where a person specifically communicates that they agree is ideal; lack of an objection by a person does not mean they are consenting, as they might not be objecting due to fear, threat, or lack of comprehension.

**Ongoing Prevention and Awareness Campaign:** A regular program that includes both the information provided during initial awareness training, as well as additional or expanded information to further understanding; intended to assist people in avoiding or preventing an incident from taking place.

**Primary Prevention Program:** One designed to keep something (e.g., injury or assault) from ever occurring in the first place; often includes education and a prohibition on undesirable conduct.

**Proceeding:** As used herein, refers to BCOM administrative disciplinary process, to include hearings and appeals, unless otherwise indicated.

**Result:** As used herein, the findings, and any resulting sanctions issued, as a result of NMSU administrative disciplinary process, to include hearings and appeals, unless otherwise indicated.

**Risk Reduction:** Precautionary measures that may be taken by an individual or a group in order to lessen the chance of an incident, injury, or violence.

## **SECTION 5 - PHONE NUMBER REFERENCE GUIDE**

NMSU Police Department	<b>EMERGENCY.....911</b>
	Non-emergency .....575-646-3311
NMSU Fire Department	Non-emergency .....575-646-2519
BCOM Security.....	575-674-2299
BCOM Assistant VP for Administration .....	575-674-2391
BCOM Director of Student Affairs.....	575-520-5173
BCOM Title IX Coordinator.....	575-674-2396
BCOM Health and Wellness Counselor.....	575-674-2228
NMSU Campus Health Center.....	575-646-1512
NMSU Department of Housing and Residence Life .....	575-646-3202
WAVE Program.....	575-646-2813
Crimson Cab .....	575-526-TAXI
ASNMSU Pete’s Pickup (Safe Walk Service).....	575-646-1111
La Piñon Rape Crisis Center.....	575-526-3427
La Casa Domestic Violence Shelter .....	575-526-2819
Domestic Violence Hotline.....	800-376-2272

### **Off-Campus Law Enforcement Agencies:**

Las Cruces Police Department.....	575-528-4200
Doña Ana County Sheriff’s Office.....	575-526-0795
Mesilla Marshal’s Office.....	575-525-8220
Sunland Park Police Department.....	575-589-6600
New Mexico State Police.....	575-382-2500
Federal Bureau of Investigation.....	575-526-2351
Drug Enforcement Administration.....	575-526-0700
US Marshals Service.....	575-527-6850
US Customs and Border Protection.....	575-528-6600



## **APPENDIX – MAPS OF CAMPUS LOCATIONS**

### ***Las Cruces Campus – Main “Triangle” and DACC Espina Campus***





## ***Las Cruces Campus – “East Campus”***





***Fabian Garcia Horticulture Center***

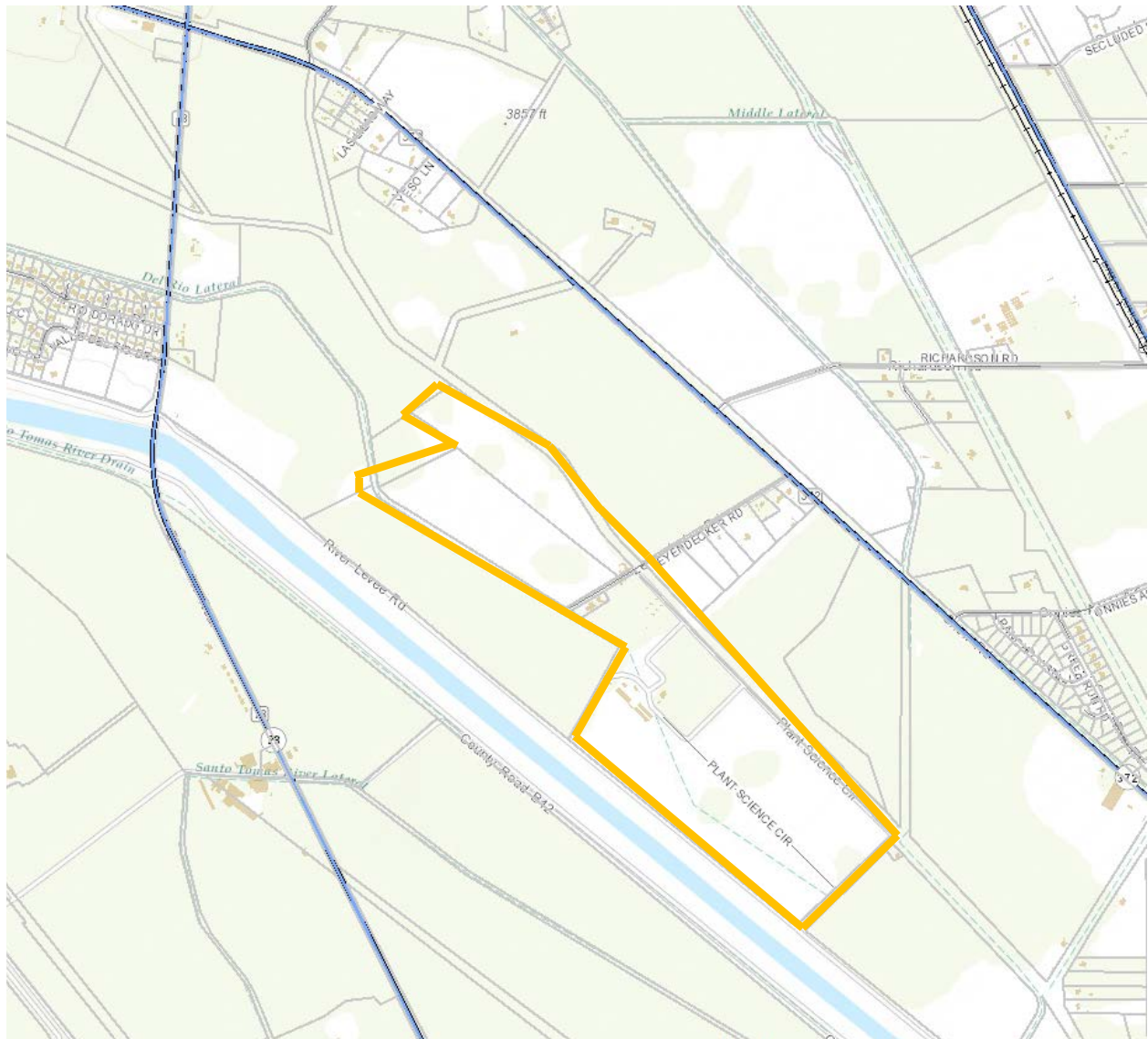


## ***Horse Farm***





## ***Leyendecker Research Facility***



## ***Burrell College of Osteopathic Medicine***

