

SUSPICIOUS PERSON

As soon as possible:

- Call BC M Security (674-2299).
- Provide as much information as possible about the person, including clothing description, height, build, hair color, eye color, jewelry, vehicle description, license plate number, etc.
- If possible, take a picture with a cell phone or other camera.
- Notify supervisors so they can take any action necessary to improve security in the office/work environment.

Virtually everyone has seen someone they thought did not belong in an area, or was doing something that didn't quite seem right. In some cases, these suspicious people have been reported and found to be terrorists conducting surveillance on a location. In these cases, many lives were saved. In other cases, it has been determined that the person was not actually doing anything wrong. In both cases, the decision to report the suspicious behavior was appropriate.

When people are planning on committing a crime, they frequently "test" the environment to see what they can get away with and the ease with which they will be able to commit their eventual crime. They often begin by doing things that are not proper, but not necessarily illegal. This may include trying door knobs to see if any are left open, looking closely at door latches to see if they might be able to jam them in the open position, taking pictures of the area (especially of sight lines, camera locations, alarm panels, doors, windows, and equipment), sitting and watching the habits and patterns of the people who work there, etc.

If something or someone doesn't feel quite right, it is always best to take the safe approach and report it to the proper police or security authorities so it can be checked out. Don't feel bad if the person ends up being innocent, as the next time the suspicious person might be up to no good.

IF YOU SEE SOMETHING - SAY SOMETHING!

SUSPICIOUS PERSON

ACTIVE SHOOTER

How to respond:

RUN:

- Have an escape route and plan in mind.
- Leave your belongings behind.
- If possible, help others escape.
- Keep your hands visible.

Hide:

- Hide in an area out of the shooters view.
- Stay away from doors and windows.
- Block entry to your hiding place and lock the doors.
- Silence your cell phone.
- Dial 911 if possible to alert police of the active shooter (If you cannot speak, leave the line open and allow the dispatcher to listen).

Fight:

- As a last resort and only when in imminent danger - attack.
- Attempt to incapacitate the shooter.
- Act with physical aggression and throw items at the shooter (i.e. chairs, fire extinguisher, or other heavy items).
- Use others to help overwhelm the shooter.

There is strength in numbers.

An Active Shooter is an individual actively engaged in killing or attempting to kill people in a confined and populated area, in most cases through the use of a firearm. There is no pattern or method to the selection of victims.

Plan for Active Shooter:

- Be aware of your environment and any possible dangers or changes.
- Take notes of exits nearest to you for escape.
- If you're in an office, understand the layout, and doors that can be locked.
- Know the designated meeting points that are safe and far enough from the building.

Providing Information When Calling 911:

- Your name and address of location
- Location of active shooter
- Number of shooters
- Any physical description of shooter
- Number and type of weapons held by the shooter
- Number of the potential victims at the location

How to Respond When Law Enforcement Arrives:

- Remain calm and follow instructions.
- Put down any items you have in your hands (i.e., purses, bags, jackets, cell phone, etc).
- Raise hands and keep fingers spread.
- Avoid quick movements towards officers such as grabbing or holding on to them for safety.
- Avoid pointing and screaming or yelling.
- Do not stop to ask officers for help or directions when evacuating.

ACTIVE SHOOTER

BOMB THREAT

By Phone:

- Pay close attention to what the caller is saying.
- Look for caller ID information on the phone.
- Use the guide in the next column to gather as much information as possible.
- Notify others nearby, call 911.
- Look for any items that appear to be out of place, report them to responding units.
- Follow departmental procedures to guide decisions on what to do next.

In Writing:

- Call 911 police to report
- To preserve potential evidence, avoid touching paper any more than is absolutely necessary.
- If threat is immediate, follow departmental procedures.
- Follow instructions provided by the emergency dispatcher.

Gather as much information from the caller. This includes:

- If a recorder is available, make sure it is running.
- Note the time and Caller ID information.
- Note which line the call is coming in on.
- Pay close attention to the exact words used.
- Keep the caller on the line as long as possible, try to get as much detailed information as possible, to include:
 - Where is the bomb?
 - When is the bomb going to explode?
 - What does the bomb look like? What kind
 - What will cause it to explode?
 - Who placed the bomb? Why?
 - Where are you calling from?
 - What is your name? Address?
- Note the following characteristics of the caller:
 - Does it sound like a male or female voice? What is the caller's demeanor (calm, angry, rushed, laughing, crying, sincere, etc.) Does the caller have any special characteristics (accent, stutter, lisp, slur, nasal sound, high pitch, low pitch, squeaky, etc.) Does the caller speak fast, rushed, slow, deliberate, loud, soft, etc.)
 - Is the voice familiar?
 - Are there any background noises?
- Follow any special instructions provided by the emergency dispatcher.

BOMB THREAT

GAS LEAK / CHEMICAL SPILL

Small Chemical Spill:

- Follow established laboratory or workplace procedures for spill management.
- Notify Supervisor.
- Properly dispose of materials.

Large Chemical spill / Gas Leak:

- Evacuate the area.
- Call 911.

Chemical Ingestion:

- Contact Poison Control Center - 1-800-222-1222.
- If needed - Call 911.

Chemicals are part of the everyday lives of virtually everyone in the United States. As such, they are familiar items to most people. This familiarity can sometimes result in the chemicals being handled in a manner that is less cautious than it should be. In addition, some accidents can occur as the result of slips and falls. Either of these can lead to a chemical being spilled into the environment.

Since chemicals vary greatly in the type and amount of danger they present, the nature of the specific chemical involved in a spill needs to be taken into consideration during an incident. Chemicals that present an inhalation hazard may need to be handled quite differently from those that only present a contact danger. Because of this, all employees who may be exposed to chemicals in the workplace need to be properly trained about the chemicals and where they can find the Material Safety Data Sheets, along with any specific departmental or laboratory procedures for spills that might exist.

In order to reduce the danger of spills, there are several steps that can be taken, including:

- Keep chemicals in their original containers.
- Have MSDS and departmental procedures clearly posted.
- Have annual training with all employees regarding chemical hazards in their workplace.
- Call 911 for any spill that is larger than the department is trained and equipped to handle.
- Make sure any cleaned up chemicals are properly contained.
- Never pour chemicals down a sink – call Chemical Hygiene Officer - (575) 674-1761 for guidance on how to properly dispose of chemicals.

GAS LEAK / CHEMICAL SPILL

EMERGENCIES

In any emergency:

- Call **9 1 1**
- Say, “This is an **EMERGENCY**”.
- Give your **LOCATION**.
- Briefly tell **WHAT** is happening.
- Stay on the line for instructions or to provide additional information to the dispatcher.

Stay safe:

- Get to a safe place as quick as possible.
- Notify others of the danger so they can also stay away.
- Monitor the situation to see if it gets worse, or if circumstances (like wind direction) change.
- Don’t take unnecessary risks to try to save property.
- Be prepared in advance for things that can be reasonably anticipated based on occupation or location.

The following are some useful resources related to emergency planning, response, and recovery. The BCOM Main Campus is covered by NMSU Emergency Services. The BCOM Research Lab is covered by Las Cruces Emergency Services.

NMSU Police Department	EMERGENCY	911	Non-emergency	(575) 646-3311
NMSU Fire Department	EMERGENCY	911	Non-emergency	(575) 646-2519
Las Cruces Police Dept.	EMERGENCY	911	Non-emergency	(575) 526-0795

New Mexico Poison Control Center 1-800-222-1222

BCOM Security Office:..... (575) 674-2299
Cell (575) 520-6358

Assoc VP for Administration, (575) 674-2391

Director of Student Life (575) 520-5173

NMSU Campus Health Center:..... (575) 646-1512

WEBSITES:

www.burrell.edu

www.nmsupolice.com

www.fire.nmsu.edu

BCOM Web Site

NMSU Police Department

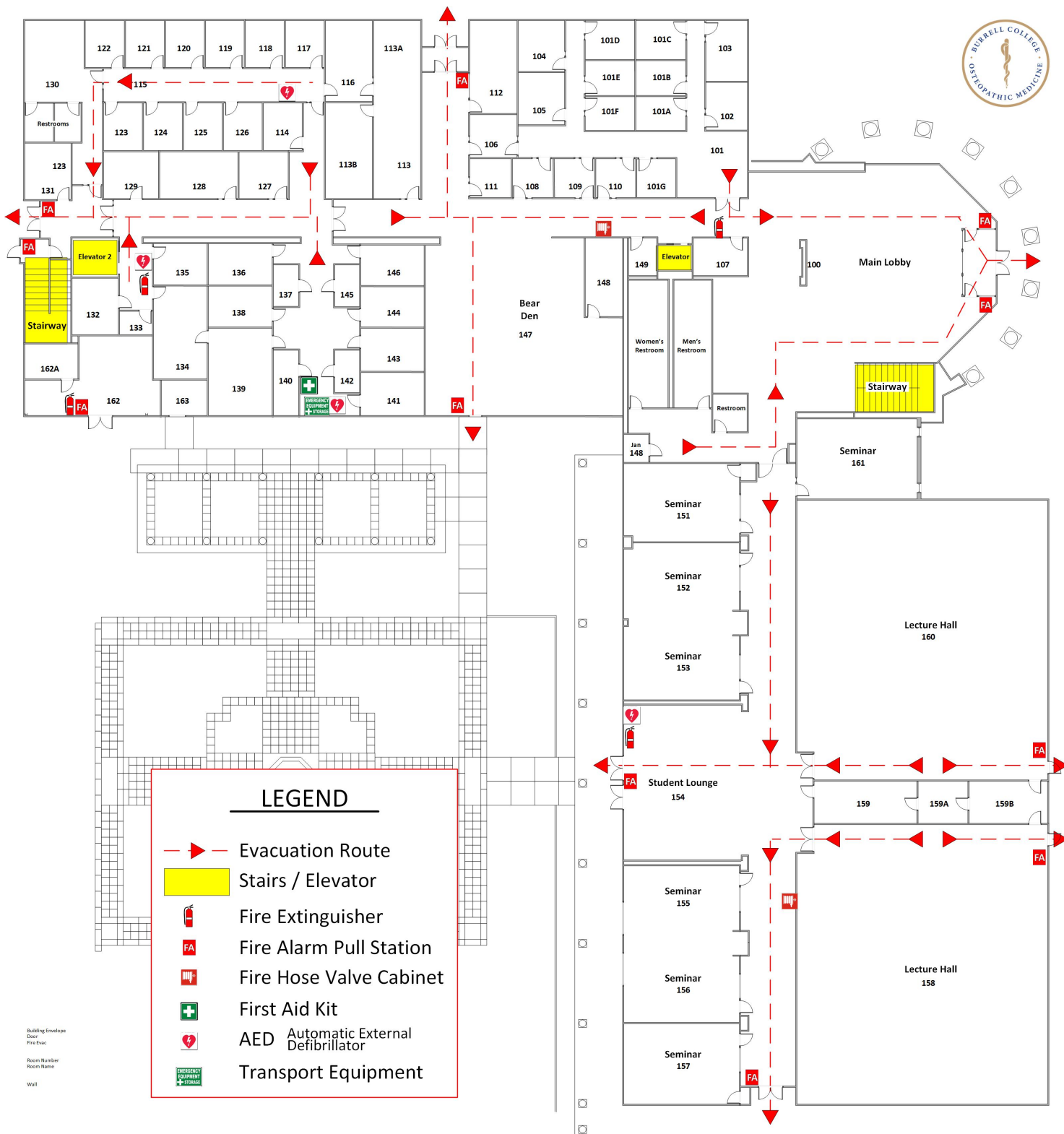
NMSU Fire Department

RESOURCES



EVACUATION MEETING LOCATIONS - MAIN CAMPUS

EVACUATION MEETING LOCATIONS - MAIN CAMPUS



LEGEND

- Evacuation Route
- Stairs / Elevator
- Fire Extinguisher
- Fire Alarm Pull Station
- Fire Hose Valve Cabinet
- First Aid Kit
- AED Automatic External Defibrillator
- Transport Equipment

Building Envelope
 Door
 Fire Exit
 Room Number
 Room Name
 Wall

EVACUATION MAP - 1st FLOOR - MAIN CAMPUS



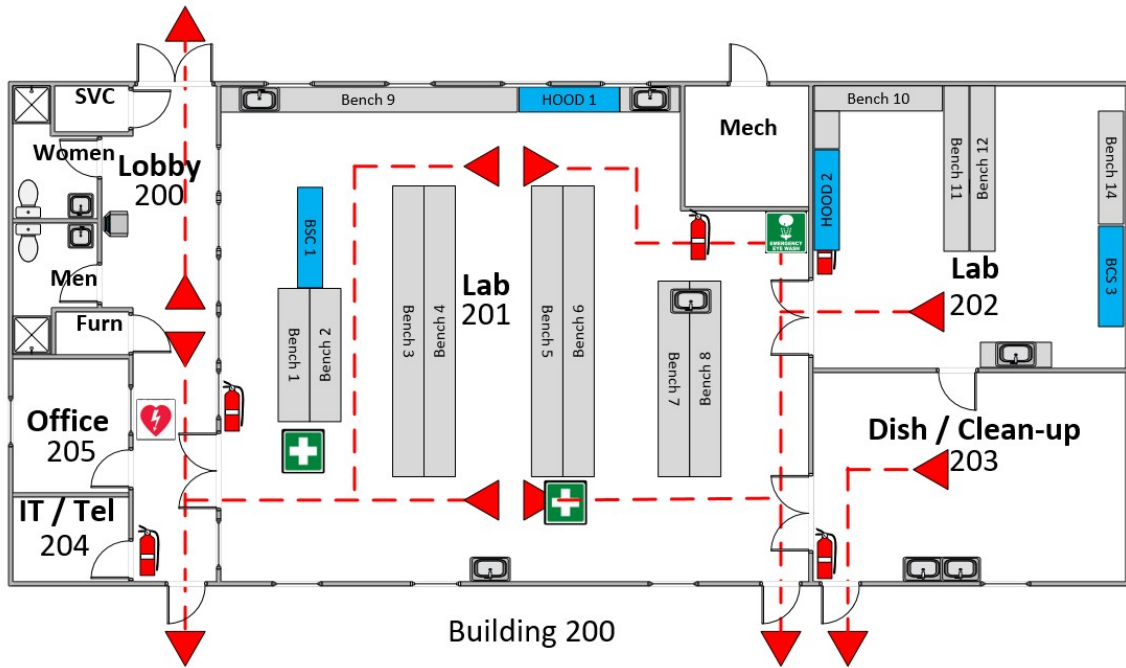
LEGEND

2nd Floor

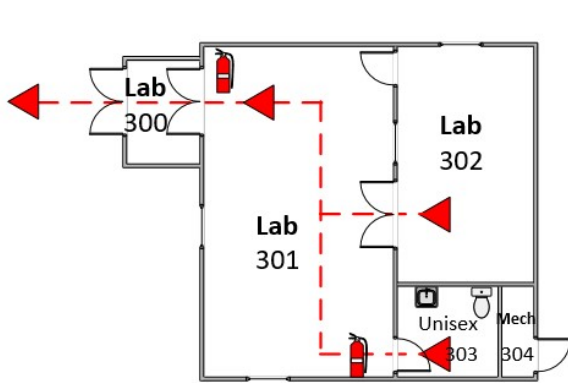
- Evacuation Route
- Stairs / Elevator
- Fire Extinguisher
- Fire Alarm Pull Station
- Fire Hose Valve Cabinet
- AED – Automatic External Defibrillator
- First Aid Kit
- Transport Equipment
- Eye Wash / Shower



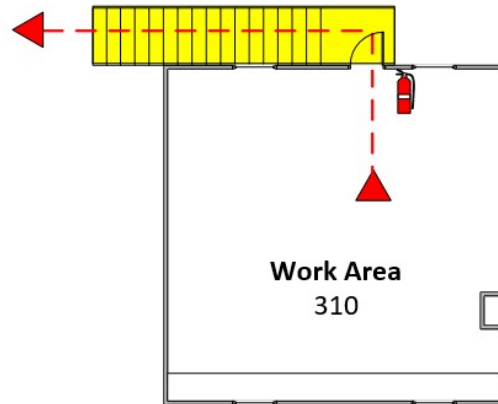
3rd Floor



Building 200



Building 300 1st Floor



Building 300 2nd Floor



Evacuation Meeting Location

