



BURRELL COLLEGE OF OSTEOPATHIC MEDICINE

*PARA LA GENTE Y EL FUTURO
FOR THE PEOPLE AND THE FUTURE*

NEW MEXICO CAMPUS: LAS CRUCES
FLORIDA CAMPUS: MELBOURNE

WHAT IS A DO?

From their first days in medical school, Doctors of Osteopathic Medicine (DOs) are trained to have a whole-person approach to patient care and focus efforts on health promotion and disease prevention. DOs also learn Osteopathic Manipulative Medicine (OMM), which can sometimes be used as an alternative to more aggressive treatments and pharmaceuticals. As fully licensed, board-certified physicians, DOs can be found practicing medicine in all specialties.



FAST FACTS



Osteopathic medicine was started in 1874 by Andrew Taylor Still, MD.



Doctors of Osteopathic Medicine throughout the country practice the full scope of medicine in all specialties of the medical field, from family medicine to obstetrics and gynecology to surgery.



Doctors of Osteopathic Medicine receive the same medical training as other physicians, and additional training in osteopathic manipulative medicine.



According to ChooseDO.org, more than 25 percent of medical students in the United States are training to be osteopathic physicians.





OUR MISSION

*PARA LA GENTE Y EL FUTURO
FOR THE PEOPLE AND THE FUTURE*

We are committed to educating a physician workforce representing the population and communities we serve. To understand us is to understand our mission: “Para la gente y el futuro,” for the people and the future. These words guide us as we set forth to improve the health of underserved communities in the United States and increase the diversity of the physician workforce. At Burrell, you won’t just become a doctor; you’ll become a patient-focused leader.



COLLEGE HIGHLIGHTS



NEW MEXICO CAMPUS



FLORIDA CAMPUS

Accredited

Fully accredited by the Commission on Osteopathic College Accreditation (COCA) and ranked second in the nation for the percentage of underrepresented minority students enrolled in colleges of osteopathic medicine.*

>99% 

Graduate Medical Education (GME) placement

94% 

2022-2023 COMLEX-USA® First Time Pass Rate (99.9% scores reported)

564 

New physician graduates (2020-2023)

10,500+ 

Student volunteer hours in 2022-2023



Kate Hall

Class of 2024

2022-2023 BURRELL'S STUDENT DOCTOR OF THE YEAR

”

Medical school is a complex and challenging environment. One of the best things you will find at Burrell is the sense of community within each cohort. Burrell does a great job of fostering that sense of community and support among its students for each other. If you have a question, send it to your classmates, and you'll get 200 responses.

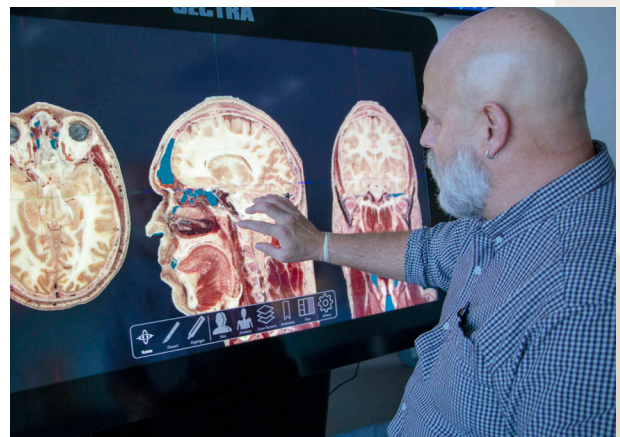
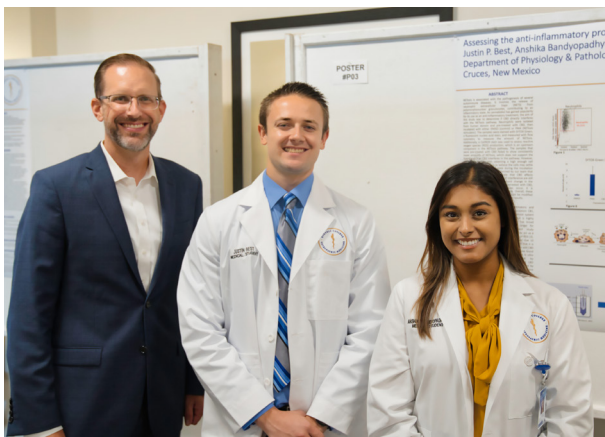
*AACOMAS Applicants & Matriculants by (Race and Ethnicity by COM, 2018-2021)



BURRELL'S CURRICULUM

Our curriculum provides academic and clinical training to become an osteopathic physician. You will learn fundamental biomedical and clinical science principles throughout your first-and second-years of the curriculum.

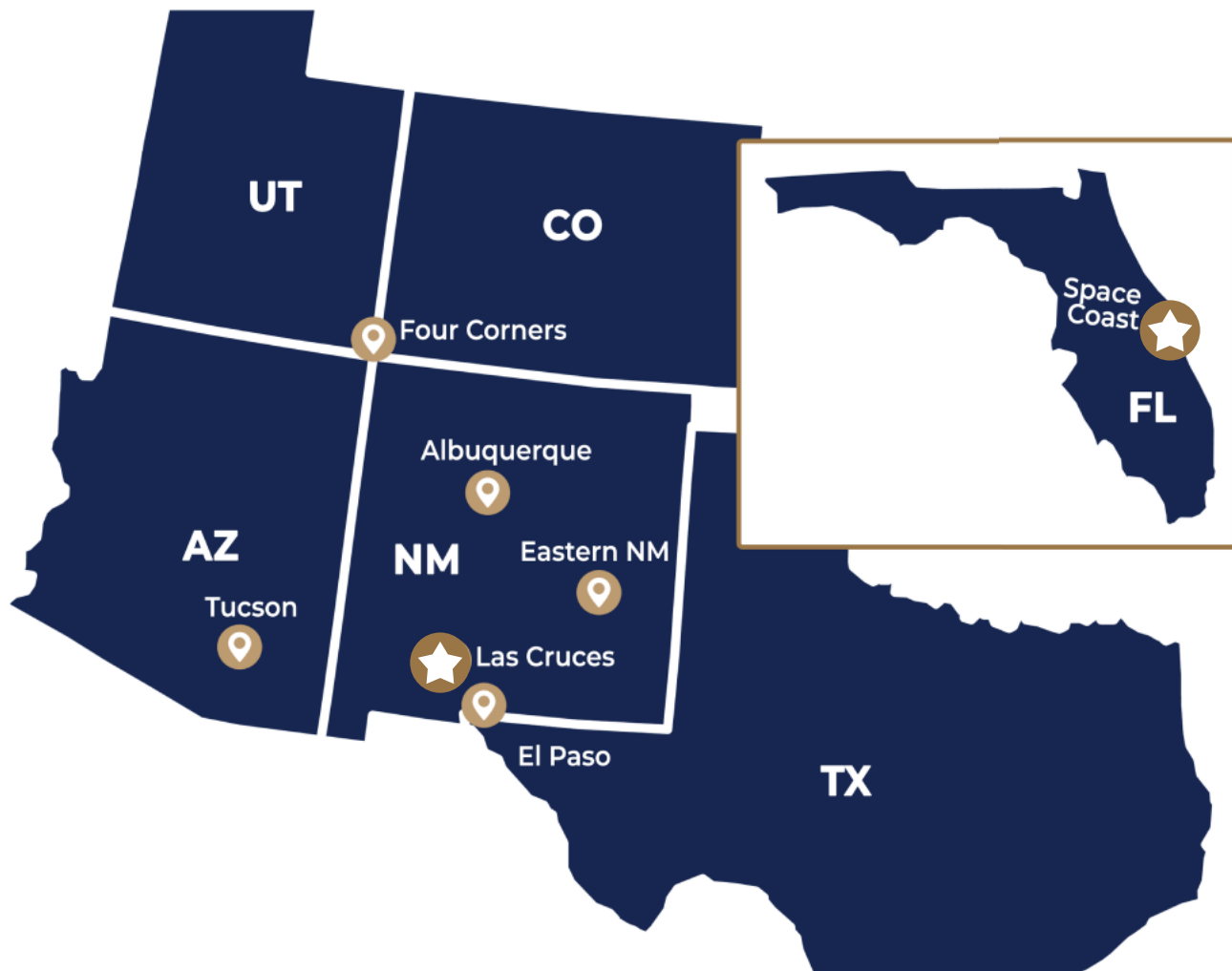
We offer an array of unique resources, including a hybrid gross-virtual anatomy laboratory, a standardized patient facility, and a high-fidelity simulation center to enhance your familiarity with clinical scenarios while developing clinical skills.



REGIONAL ACADEMIC CENTERS

We have established Regional Academic Centers (RACs) in New Mexico, Texas, Arizona, and Florida for your third-and fourth-year clinical education. A network of hospitals, medical centers, and practicing physicians support a comprehensive selection of generalist and specialty clerkship experiences. You will treat diverse patient populations while cultivating your interests and developing a well-rounded, clinical skillset.

LOCATIONS





SIMULATION CENTER

Our Simulation Center includes opportunities for students to learn and be assessed in clinical skills acquisition in an educational setting. You will hone physical exam skills, refine techniques and procedures, and learn beneficial communication and social interaction lessons with future patients.

The Simulation Center offers different training opportunities, including:

- High-fidelity mannequin-based training that mimics patient conditions and real-world scenarios, providing real-time learning opportunities.
- Procedure-specific training, in which you use models to learn and practice specific clinical procedures. Additional lab hours are available upon request to practice skills further.

Our Simulation Center includes simulation rooms configured to emulate standard hospital and delivery rooms. Each room is fully wired for audio and video. Faculty members may observe your performance live or by video recording and offer post-session feedback during a debriefing session.



STANDARDIZED PATIENTS

Standardized Patients (SP) are trained to portray patients realistically with assigned symptoms and scripts. You will engage in SP encounters to practice clinical skills. These interactions begin within your first month of medical school and continue throughout the first two years of the curriculum.

During your interactions, the SP presents the case history in response to your questioning and undergoes a physical examination at your direction. At the end of the encounter, our faculty provide constructive feedback.



Rebecca Nika Tsai

Class of 2026

Burrell's culture of mentorship, support, and experiential learning provides my ideal training environment. The students I met during the interview cycle were warm, positive, and genuinely passionate about serving the underserved, which resonates with who I am and my mission.





DEPICTS THE NM CAMPUS

GROSS ANATOMY LAB

Our Gross Anatomy Lab features dissection tables, digital anatomy workstations, scrubs stations, instructional models, and anatomical specimens. Incorporating digital anatomy, which can encompass everything from sectional and radiological images through the microscopic anatomy of embryology and histology, makes the lab a versatile addition to the educational resources available.

The infrastructure design make the gross anatomy lab an inviting space for discovery and learning human structure and function.





ACADEMIC OPPORTUNITIES

RESEARCH

- You are provided opportunities to engage in faculty-supervised research in basic biomedical science, clinical science, population and public health, and medical education.
- Opportunities also include a summer research program and Medical Student Research Day.
- Longitudinal Distinction in Research pathway is available for motivated students.

DIRECTED HUMAN DISSECTION

- You are offered the opportunity to engage in an intensive experience in gross anatomical dissection during the summer between the first and second year.
- Includes whole body, cadaveric dissection, and clinical imaging.

RURAL MEDICINE

- Our Rural Medicine Distinction is open to qualified medical students in their third year, serving in the rural Regional Academic Centers (RACs).
- Rural medicine opportunities empower students to understand unique healthcare needs of rural areas and equips students to make a meaningful, positive impact.



STUDENT ENGAGEMENT

With over 50 active student organizations, you will find one that inspires you. Engage beyond the classroom by making lifelong connections with classmates, faculty, staff, and the community.

➤ STUDENT INITIATIVES

Our student organizations have led initiatives that have contributed positively to the health of our communities, such as Protect New Mexico. During the pandemic, our students joined the faculty and the New Mexico Department of Health to run one of the first COVID-19 testing sites in the Southwestern US. Their hard work and dedication earned them state recognition and several awards, including the Crisis Response Team at the 2022 Health Care Awards organized by the Greater Las Cruces Chamber of Commerce.



DIVERSITY AND INCLUSION

We champion diversity as our strength and we use it to exemplify our motto of “For the people and the future.”

The Office of Diversity and Inclusion provides the direction, framework, and understanding to foster and sustain an equitable campus culture that encourages fairness, collaboration, and flexibility. This ensures an innovative environment where all employees and students can experience and contribute to a healthy community. We embrace our visible and invisible diverse qualities and use inclusion to leverage those differences to make a difference. We know that diversity and inclusion are not just about who we are; they govern how we carry out our mission, operate our vision, and exercise our guiding principles.

Diversity and inclusion are everyone’s responsibility as a core tenet, and recognizing and welcoming the myriad of intellectual and social values represented in our halls makes this campus’ culture rich and rewarding. We value helping each other and learning from one another.



Top Colleges for Diversity

We are one of only six osteopathic medical schools to receive the 2022 Health Professions Higher Education Excellence in Diversity (HEED) award from INSIGHT Into Diversity magazine.



Alberto Velasco

Class of 2025

FORMER STUDENT GOVERNMENT ASSOCIATION (SGA)
EXECUTIVE BOARD PRESIDENT
ENS, UNSR, MC

I chose Burrell because of the inclusivity they strive to achieve. They have created a welcoming environment for anyone, which is important to me as a student body representative.



NEW MEXICO CAMPUS

Nestled in the Mesilla Valley against the beautiful backdrop of the Organ Mountains in Southern New Mexico, Las Cruces offers breath taking monuments, authentic flavors, unique festivals, unforgettable landscapes, vibrant culture, and over 300 days of sunshine each year. Easily accessible from two major interstates, Las Cruces is home to one of the top farmer's markets in the country. The region is considered the chile capital of the world.



One hour from
El Paso International
Airport (Texas)



One hour drive from
White Sands
National Park



Over 100 Miles of
scenic hiking and
biking trails



Home to the Organ
Mountains-Desert Peaks
National Monument



NMSU AFFILIATION

We might be a small, private institution, but our students benefit from our proximity to, and affiliation with, a larger university, New Mexico State University (NMSU). Our campus is located on the NMSU campus, which means you have access to additional benefits, such as:

- The NMSU Health and Wellness Center for routine physical health services
- The NMSU Activity Center, complete with a weight room, group fitness, indoor basketball courts, racquetball courts, indoor track, and climbing and bouldering walls
- The NMSU Aquatic Center offering both indoor and outdoor pools
- The Tennis Center
- Eligibility to play Intramural Sports
- Access to all on-campus Division-I NMSU athletic events
- Access to convenient, affordable housing
- Additional study space at NMSU libraries and the student union
- Aggie Transit campus shuttle bus
- Crimson Cab, a free local taxi service
- Airport Shuttle





FLORIDA CAMPUS

Our Florida campus is located in Melbourne, in the southern part of Florida's Space Coast. Our students enjoy spending time outdoors, visiting beaches, snorkeling, fishing, and boating. With a small-town feel and nearby attractions, including the Kennedy Space Center, the Indian River Lagoon Preserve State Park, Orlando, and Walt Disney World, Melbourne is a great landing place for your medical education.



Near Melbourne
Orlando International
Airport



Access to Atlantic
Ocean beaches



Located on the
Space Coast



Close to world-class
amusement parks



FLORIDA TECH AFFILIATION

We might be a small, private institution, but our students benefit from our proximity to and affiliation with a larger university, Florida Tech. Our campus is located on Florida Tech's campus, which means you have access to additional benefits, such as:

- Florida Tech's Holzer Health Center which offers routine physical health services
- Access to convenient, affordable housing
- Additional study space at Florida Tech libraries and the student union
- Access to the Florida Tech Panther Aquatic Center and tennis courts
- The Clemente Center, an activity center complete with a weight room, group fitness, indoor basketball courts, and racquetball courts

- Eligibility to play Intramural Sports
- Access to all on-campus Division-II Florida Tech athletic events
- Campus Panther Trolley and Shuttle service



FINANCIAL AID

As a student attending the Burrell College of Osteopathic Medicine, we are committed to investing in your future. Our Office of Financial Aid is dedicated to helping you achieve your success and is always ready to guide you through financing your education. We provide students with financial assistance in scholarships, federal benefits, and student loans.

- Students are encouraged to apply for our foundation scholarships through an annual application.
- We are approved by the NM Department of Veterans' Services, State Approving Agency, at the NM campus, to certify students eligible to receive VA educational benefits. We are proud to assist service members, veterans, and their families in accessing the education benefits they earned.
- Private student loan opportunities are available for interested students.
- Federal Financial Aid (Title IV) is available to students attending our New Mexico campus only.



Financial
Aid



Giselle Irio, D.O.
Alumna, Class of 2021
INTERNAL MEDICINE RESIDENT



Burrell gave me a lot of opportunities and support, even in financing. I was in the second class, and we were still developing our student organizations. Sometimes the leadership within our organizations could travel to conferences thanks to Burrell's financial support. Those opportunities allowed me to meet Senators and representatives at the Federal level, and I'm very thankful for that.

STUDENT AFFAIRS

Our Office of Student Affairs is involved in all aspects of your campus life, including individualized learning support and career counseling. Student Affairs oversees academic and non-academic student programming and activities, student government functions, and the facilitation of organizations. They strive to facilitate a learning environment free from academic and non-academic impediments and are governed by strong foundational values: integrity, respect, innovation, excellence, and service.



Kathryn Cerami
Class of 2025



Burrell provides ample opportunities for students to pursue their medical interests in multiple ways. I've been able to volunteer in the community with many different programs, have been exposed to multiple different leadership experiences, and have been able to meet and work with many talented professors, physicians, and students.

ADMISSIONS

The Office of Admissions seeks applicants inspired by the College's Mission and seeking unique opportunities to engage with diverse communities. We use a holistically driven, rolling admissions process where applicants are assessed in several areas, including academic and non-academic characteristics. We encourage you to review all the admission requirements and process information on our website for the cycle for which you are applying.

Pre-screening minimum requirements:

- Current U.S. Citizen or U.S. Permanent Resident
- Submission of a Medical College Admission Test (MCAT) Score

YOUR CHECKLIST

- 1 Apply via AACOMAS.org and designate Burrell
- 2 If invited, complete the Burrell Supplemental Application
- 3 Select a preferred campus: New Mexico or Florida
- 4 Visit campus in person or virtually

EXPLORE
MORE



/BurrellCollege



/BurrellCollege



/BurrellCollege



/BurrellCollege



/BurrellCollege

Office of Admissions
admissions@burrell.edu
575-674-2210