



# **Burrell College of Osteopathic Medicine**

## **2023 Annual Safety and Security Report**

With Statistics from January 1, 2022 to December 31, 2022

Release Date: October 1, 2023



## INTRODUCTION

This report contains information regarding safety and security programs, policies, and procedures in place at Burrell College of Osteopathic Medicine (Burrell). It complies with the requirements established by 20 USC 1092, also known as the Jeanne Clery Disclosure of Campus Security Policy and Campus Crime Statistics Act, as well as the requirements imposed by the amendments to the Violence Against Women Act (VAWA). Statistics from January 1, 2022 through December 31, 2022 required by this Act are included in this report.

Due to the Burrell campus being physically located on the New Mexico State University (NMSU) campus and its established agreements (such as housing and facility usage for Burrell students) with NMSU, statistics from the Las Cruces NMSU campus are required to be included in this report. While these numbers do not necessarily reflect reportable crimes on the Burrell campus itself, the statistics are reflective of Burrell's geographic location. The statistics also include non-campus locations which can be found in the description of Clery geography in Section 4 of this report.

Campus Security Authorities and agencies that were utilized for the collection of statistics include the NMSU Police Department, Albuquerque (NM) Police Department, Las Cruces (NM) Police Department, Roswell (NM) Police Department, Las Vegas (NM) Police Department, Farmington (NM) Police Department, Taos Police Department, El Prado (NM) Police Department, El Paso (TX) Police Department, and Globe (AZ) Police Department.

## Table of Contents

INTRODUCTION.....	1
SECTION 1 – OVERVIEW.....	4
ABOUT BURRELL.....	4
PUBLIC SAFETY AGENCIES AFFILIATED WITH BURRELL.....	4
SAFETY.....	4
CAMPUS SECURITY OFFICIALS.....	5
SECURITY OF BUILDINGS AND FACILITIES.....	5
HOUSING POLICIES.....	6
SECTION 2 – EMERGENCIES AND INCIDENTS.....	7
TIMELY WARNINGS AND EMERGENCY NOTIFICATIONS.....	7
EMERGENCY PLANS, TESTS AND EVACUATIONS.....	8
EMERGENCY ACTIONS.....	8
FIRE STATISTICS AND FIRE SAFETY REPORT.....	8
BURRELL POLICIES AND PROCEDURES.....	9
MISSING PERSON REPORTS.....	9
IF YOU ARE THE VICTIM OF A CRIME.....	9
SEXUAL ASSAULT, HARASSMENT, AND STALKING.....	11
SEX OFFENDERS.....	12
MEASURES TAKEN BY BURRELL.....	13
SECTION 3 – SAFETY AND SECURITY PROGRAMS.....	14
SAFETY CLASSES AND TRAINING.....	14
NEW STUDENT ORIENTATION.....	14
DRUG FREE SCHOOLS AND COMMUNITIES.....	15
NMSU RESIDENCE HALL SAFETY AND SECURITY PROGRAMS.....	15
BURRELL PHYSICAL AND BEHAVIORAL HEALTH SERVICES.....	16
TIPS TO PREVENT CRIME.....	17
OTHER SERVICES AVAILABLE.....	17
SECTION 4 – CRIME STATISTICS.....	18
CRIME STATISTICS FROM JANUARY 1 <sup>ST</sup> 2021 TO DECEMBER 31 <sup>ST</sup> 2021.....	18
DEFINITIONS OF CLERY ACT LOCATIONS (General).....	19
CLERY GEOGRAPHY.....	19
CRIME STATISTICS: 2019, 2020, 2021.....	22
CRIME LOG/BLOTTER AND INCIDENT REPORTS.....	23
TRACKING CRIME INCIDENTS AND REPORTS.....	23

OFF-CAMPUS CRIME .....	24
WE NEED YOUR HELP – REPORT CRIME! .....	24
RESPONSIBILITY FOR POLICY MONITORING AND ENFORCEMENT .....	24
OTHER DEFINITIONS.....	24
SECTION 5 - REFERENCE GUIDE .....	26
ON-CAMPUS RESOURCE DIRECTORY .....	26
OFF-CAMPUS LAW ENFORCEMENT AGENCIES .....	26
APPENDIX – MAPS OF CAMPUS LOCATIONS .....	28
BURRELL COLLEGE OF OSTEOPATHIC MEDICINE .....	28
NMSU LAS CRUCES CAMPUS – MAIN TRIANGLE AND DACC ESPINA CAMPUS .....	29
NMSU LAS CRUCES CAMPUS – EAST CAMPUS .....	30
NMSU LAS CRUCES CAMPUS – FABIAN GARCIA HORTICULTURE CENTER .....	31
NMSU LAS CRUCES CAMPUS – HORSE FARM .....	32

## SECTION 1 – OVERVIEW

### ABOUT BURRELL

The Burrell College of Osteopathic Medicine (Burrell) at New Mexico State University is dedicated to improving the health of the Southwestern United States and its border with Northern Mexico through osteopathic medical education and training. While Burrell is a private and freestanding college, our unique partnership with New Mexico State University (NMSU) allows students to enjoy student life and campus community benefits that come with a major public university. Burrell's students have access to many NMSU facilities and services, such as athletics, intramural sports, some health services and recreational facilities. Burrell students can also utilize NMSU's housing and meal services, at an additional cost. The College has two buildings, the main building is 80,000 square ft. and the second building is 10,500 square ft., both are located at the Arrowhead Research Park on the NMSU campus. Due to Burrell's geographic location, statistics from the Las Cruces NMSU campus are included in the report. Burrell has ten, non-campus reporting locations which can be found in the description of Clery geography in Section 4 of this report.

### PUBLIC SAFETY AGENCIES AFFILIATED WITH BURRELL

Burrell relies on support from the NMSU police and fire departments for assistance. The NMSU Police Department (<https://www.nmsupolice.com/>) provides patrol, criminal investigation, and emergency dispatching services for the NMSU campus inclusive of Burrell. All police officers are highly trained, certified, and have full arrest powers. All officers must complete a basic police officer academy and be certified by the New Mexico Law Enforcement Academy Board. In addition, a number have specialized training and work with other agencies in the region. Some are nationally certified handlers of explosives detection dogs, while others participate on regional response teams that investigate special crimes, as well as statewide task forces with a variety of state and federal agencies. All dispatchers working in the NMSU's Emergency Dispatch Center are also fully trained and certified by the State of New Mexico. They answer the 911 calls coming into the center from campus, and dispatch police, fire, and emergency medical services. The NMSU Fire and Emergency Services Department (<https://fire.nmsu.edu/>) provides fire protection and emergency medical response for the Burrell campus. A team of full-time, experienced fire professionals lead the department who are trained and certified as firefighters, emergency medical technicians, and even hazardous materials technicians.

While not a traditional public safety agency, the NMSU Environmental Health & Safety Department (<https://safety.nmsu.edu/>) also works to ensure a safe environment at university and college facilities throughout the state. The staff provides safety training and assists with development of safety procedures for laboratory safety, hazardous waste management, emergency planning and response, oversees laboratory safety and hazardous waste management, assists with emergency planning and response, and a host of other functions intended to help keep the campus safe. The department supports guidance for emergency preparedness from the New Mexico Department of Health and the Centers for Disease Control and Prevention.

### SAFETY

A campus community relies on a safe and secure environment. Preserving this environment is a responsibility of the Burrell community. Members of the Burrell community are expected to be conscious of personal safety, be aware of policies and procedures of the College, and promptly report any crime or suspicious activity to campus security authorities. While the NMSU Police Department, and other campus safety entities work to keep the campus safe, they cannot do so when people intentionally choose to engage in risky activity. Everyone is encouraged to be aware of their surroundings and avoid suspicious or dangerous situations whenever possible. Burrell community members are also encouraged to follow common safety practices

that include locking doors and windows, using seatbelts, and avoiding the over-consumption of alcohol. The College encourages the Burrell community to report situations where danger exists.

### CAMPUS SECURITY OFFICIALS

Campus Security Authorities (CSAs) are individuals who the institution has identified as individuals who can be approached regarding notification of a crime. Burrell College CSAs are as follows:

1. Police Officers
2. Emergency Dispatchers
3. Security Officers assigned to monitor or control access to Burrell property and/or NMSU property.
4. President of the College
5. Dean of the College
6. Associate Vice President of Administration
7. Assistant Vice President of Student Affairs or other Office of Student Affairs Staff
8. Assistant Vice President of Human Resources or other Office of Human Resources staff
9. Associate Vice President of Institutional Effectiveness
10. Environmental Health and Safety Officer
11. Title IX Coordinator

Personnel in the above roles cannot offer nor guarantee confidentiality as it relates to reporting of crimes, though efforts are often made to protect the safety and privacy of crime victims to the extent allowed by law. The campus security authorities are encouraged to promptly and accurately report all crimes, even if they do not appear to be Clery-reportable crimes. The primary duty of CSA personnel designated is to report to the NMSU Police Department any allegation or information about a Clery Crime reported to them or any other emergency situation. It is not within the CSA's authority to investigate, to apprehend an alleged perpetrator, or to persuade an alleged victim to file a police report.

### SECURITY OF BUILDINGS AND FACILITIES

Several systems and protocols are in place to make the Burrell campus as safe as possible for students and staff. Access to any part of the Burrell facility is managed by Burrell's Associate Vice President of Administration. All students and staff are issued photo ID badges and are required to wear them visibly when in the buildings. Access to the buildings, classrooms and offices, are provided by a combination of electronic access control keycards and/or physical keys. Electronic and physical access is granted based on an individual's status (e.g. staff or student) as well as job responsibilities. Students and staff have access to the buildings beyond the typical public hours, based on the access granted via their key card credentials. All uses of keycards are monitored and recorded. Individual cards can be immediately locked out if lost or misplaced. Student access hours vary, but typically end at midnight on weekdays and 10:00pm weekends. All keys are issued and inventoried by the Associate Vice President of Administration office.

Burrell Security is contracted through a third-party contractor. The security personnel are certified by the New Mexico Department of Public Safety and are thoroughly trained in all aspects of security and safety. Burrell Security monitor the College's campus anytime students are present in the buildings. The security officer is responsible for clearing and securing the buildings after hours. The buildings are typically open to the public from 8:00 am to 5:00 pm on weekdays. During these hours, entrances open to the public remain locked and monitored by personnel. All visitors are required to sign in and out, are provided with a temporary badge, and are typically escorted to the areas they are visiting. Burrell Security monitor an extensive network of security cameras which record activities 24 x 7 for both interior and exterior building areas. Access to this system is restricted to appropriate staff and security personnel. The system is primarily designed for forensic analysis after the fact. A public address system provides the capability for emergency announcements throughout the building and office areas.

Custodial services are provided by a 3<sup>rd</sup> party contractor. All custodial staff are background and drug screened by the contractor. Ancillary contractors that may need access to the building for service or maintenance work sign in/out with the Security Office and may be temporarily issued keys from an inventoried key locker.

### HOUSING POLICIES

Burrell students are allowed to utilize housing on the NMSU campus. Because the housing is owned and controlled by NMSU, the safety programs and information related to the housing is addressed in the NMSU Annual Security Report and the NMSU Annual Fire Safety Report (<https://www.nmsupolice.com/safety/annual-reports.html>). For more information about housing policies related specifically to NMSU safety and security, please visit <https://housing.nmsu.edu/>.

## SECTION 2 – EMERGENCIES AND INCIDENTS

### TIMELY WARNINGS AND EMERGENCY NOTIFICATIONS

When there are major incidents or emergencies that affect a large number of people and that present an immediate threat to health or safety, Burrell and/or NMSU will issue advisories, alerts, or warnings as appropriate, to not impede the public safety response or further endanger lives. An **Emergency Notification** is used when there is immediate danger or threat. Examples include manmade and natural disasters, violent crimes in process, or similar emergency situations. A **Timely Warning** is used when there is an ongoing situation or crime trend that may pose a danger but is not immediately dangerous. Examples include murder, rape, robbery, aggravated assault, and hate crimes. Other crimes may warrant a timely warning based on the level of danger or risk present to the College community. An **Advisory** may be used for situations that do not involve immediate danger such as traffic situations or non-Clery reportable crimes. Advisories may be sent out via e-mail, news media, or Burrell's social media pages.

The decision on whether to issue one of the above notices, and the information contained therein, rests with the NMSU's Executive Administration and/or Burrell's Associate Vice President of Administration. The NMSU Executive Administration and/or Burrell's Associate Vice President of Administration may make the decision not to issue a notice if the situation is deemed not to warrant one, or if doing so might hamper the ability of public safety personnel to respond to and contain the incident. In a situation of inclement weather closure, Burrell will follow the decision(s) of the Las Cruces NMSU campus. Any deviation from that decision must be made by the College's Executive Administration.

Participation in the electronic Emergency Notification System (ENS) is mandatory for all students and employees at Burrell, with e-mail being the default notification. Per Burrell policy, email is used as the College's official communication. In order to receive text messages and phone calls, the student or employee must register the appropriate contact information with the IT Department. An emergency notification will generally contain the following information:

**WHAT:** This is a brief description of what is taking place. For example, it may indicate there is a tornado warning, a fire, a bomb threat, or a person shooting. If the message is not an emergency (e.g., a test message), it will be indicated here.

**WHERE:** This provides information about where the emergency is taking place. It will be as specific as the particular situation allows but should always include which campus(es) is being affected.

**ACTION:** This is where recipients will find specific guidance on what to do because of the emergency (e.g., be on the lookout, shelter in place, evacuate, etc.). To make the system work as fast as possible, these messages are necessarily kept very brief, and additional information will usually be made available via Burrell email. (NOTE: On-scene direction from public safety personnel, media releases, update e-mails, and other forms of communication may also be used as appropriate. Follow the most current and specific guidance provided.)

**MORE INFO:** This section will explain where to go for more detailed information regarding the emergency. This will usually include navigating to the NMSU or Burrell website.

As part of the ENS, NMSU has installed two outdoor sirens to provide an additional tool for notifying the public of severe weather emergencies. The sirens are only used in those circumstances where there is extreme, immediate danger to the entire community, such as a tornado warning or large hail likely to cause injuries. Upon hearing a siren, students and employees should immediately seek shelter and then seek additional information via news media or by checking for email updates. In addition to or in lieu of the ENS activation, NMSU's Executive Administration and/or Burrell's Associate Vice President of Administration may utilize other means of notifying people in the immediate vicinity of a localized emergency. This may include making an announcement on a public address system and activating an alarm.

The NMSU police and fire departments are able to handle all routine calls without reliance on outside entities for a crisis response. If an incident overwhelms the NMSU departments, mutual aid agreements are in place to for rapid assistance from other agencies in the area. If an emergency still overwhelms available resources, requests are directed to the New Mexico Department of Homeland Security and Emergency Management. The NMSU Emergency Dispatch Center works with the Mesilla Valley Regional Dispatch Authority to monitor significant off-campus incidents. The Police Department has also asked outside law enforcement agencies to notify NMSU authorities of incidents that may warrant warnings to the NMSU and Burrell communities. However, this is not a guarantee these outside agencies will do so in every incident, nor in a timely manner. As a result, anyone believing an alert or warning is needed in a particular instance should contact the NMSU Police Department or Burrell Security.

### EMERGENCY PLANS, TESTS AND EVACUATIONS

Burrell annually trains faculty, staff and students on emergency preparedness. The College's website contains emergency procedures to follow as well as resources related to support for emergency planning, response and recovery: <https://burrell.edu/campus-safety-and-security/>. Burrell tests the functionality of its plan through evacuation drills and joins NMSU in tests of its emergency notification system.

### EMERGENCY ACTIONS

If you are involved in a dangerous or life-threatening emergency, take the following steps immediately:

- Get to a safe place as quickly as possible. Generally, the further you can get away from the scene, the safer you will likely be.
- Report the emergency by calling 911. Say, "This is an **EMERGENCY**", give your **LOCATION**, and briefly tell **WHAT** is happening.
- Notify others of the danger so they can also stay away.
- Monitor the situation to see if it gets worse or if circumstances (like wind direction) change. Notify the emergency services dispatcher (911 operators) of the changes.

All students and employees are also encouraged to prepare in advance for emergencies, whether from natural disasters (such as floods, tornados, earthquakes, extreme heat, lightning, disease outbreak, etc.) or manmade incidents (including traffic crashes, hazardous chemical releases, downed electrical lines, criminal activity, terrorism, arson, etc.). The College provides Emergency Procedures to all faculty, staff and students within Burrell. Additional information is available on the College's website: <https://burrell.edu/campus-safety-and-security/>.

While Burrell conducts evacuation drills each year, students and employees should always be mindful of emergency evacuations. Anytime a person enters a building, they should also look to see what other avenues of emergency escape exist, whether through additional doors, designated fire exits, or even windows. Students and employees should also know where the designated escape routes and exits are in those buildings they live and/or work in, as well as any potential specific challenges (such as stairs might present for a person in a wheelchair).

### FIRE STATISTICS AND FIRE SAFETY REPORT

Statistics on fires and fire responses (other than arson), as well as the Fire Log, are managed by the NMSU Fire and Emergency Services Department. Burrell produces an Annual Fire Safety Report which includes fire statistics for NMSU residence halls that were utilized by Burrell students. The report also includes fire prevention efforts conducted by Burrell on main campus. For further information please see the Annual Fire Safety Report: <https://burrell.edu/campus-safety-and-security/clery-report/>

## BURRELL POLICIES AND PROCEDURES

Policies and procedures related to discrimination, sexual misconduct, harassment, alcohol, drugs, safety and security, weapons and firearms, missing person notification, code of academic and professional ethics and other related topics may be found on the College website at: <https://burrell.edu/faculty-staff/institutional-policies/> and <https://burrell.edu/about-bcom/sop/>.

If a person wishes to report a crime for inclusion in this report, or to report an emergency on campus, they should do so by contacting the NMSU Police Department by dialing 911, calling (575)-646-3311, or by going to the NMSU Police Department at 725 College Drive, University Park, NM 88003. Reporting may also be made to College campus security authorities.

## MISSING PERSON REPORTS

Any report of a missing person is immediately investigated by the NMSU Police Department. There is no 24-hour waiting period, and attempts to locate the person will include contacting surrounding law enforcement agencies, notifying the missing person's designated contact(s), notifying parents or guardians if the missing person is less than 18 years of age, contacting known family members and friends, and posting of bulletins and news releases, as well as notifying the State of New Mexico Missing Person Information Clearinghouse (<http://www.missingpersons.dps.state.nm.us/>) In addition, the NMSU Police Department will notify appropriate Burrell officials that a person is missing. The College's Missing Person Notification policy can be found [here](#).

When a Burrell student is provided an Aggie ID via NMSU, they are asked to provide Emergency Contact Information, and this confidential information is used by the Police Department and Burrell Officials in contacting family and/or friends. One or more of these people may be designated as a person to contact solely for purposes of trying to find a student should they be missing. The same person, or others, may also be designated for contact in other emergencies involving the student. All students are strongly encouraged to designate and provide the names and contact information of the people they would like contacted under these circumstances. This may be done at the website <http://emergency.nmsu.edu> or through the Office of Student Affairs at Burrell.

Any Burrell employee who, through the course of their employment, is informed that a person is missing from campus is required to immediately notify the NMSU Police Department. If there is information an abduction has just taken place, the employee should call 911. Otherwise, the person should call 575-646-3311 and provide the information to the emergency services dispatcher. A police officer will then be dispatched to meet and gather additional information.

## IF YOU ARE THE VICTIM OF A CRIME

If you are the victim of a crime, whether while on campus or off campus, or experience a fire or medical emergency, you are encouraged to report it immediately by calling 911. For non-emergencies taking place on campus, call (575) 646-3311. When you call, give your name, the location you are calling from, a brief description of what occurred, and whether there is still a danger present (e.g., the person who committed the crime is still present). Prompt reporting and specific information will increase the chances of solving your case. A police officer will be dispatched to meet with you and obtain all of the necessary information. Here are some guidelines regarding preserving evidence while you wait for an officer:

- If evidence from the crime is still intact, try not to move or destroy it. This includes avoiding trying to clean up the area, moving or throwing away items, or wiping down surfaces.

- If there are text messages, e-mails, voice mails, or other electronic evidence, preserve the original (if possible) or make a copy (if the original might be deleted, such as with Snapchat and similar programs) and provide this evidence to the police officer who responds;
- If you are being harassed or stalked, keep a log of any contact or sightings you have of the suspect, to include any third-party contacts where the suspect uses someone else to contact you or monitor your activities;
- If you are the victim of a sexual assault, avoid showering, changing clothes, or grooming, as these can destroy evidence. Protect any bedding or towels, clothes you were wearing, or other items where evidence may have been left. If possible, avoid the use of the bathroom, and consider getting a SANE Exam (described below) as soon as possible to identify and collect evidence that may be on your body. The first few hours are the most critical, but useful evidence can still be obtained 24 hours or more after some sexual assaults.
- If you chose to not report the crime immediately to police, you are still encouraged to write down as much as you can remember (when you are able to) so that if you decide to report at a later time, you will have something to remind you of critical details. Try to include as many details about what happened, as well as everything you can remember about the suspect. Include things you saw, heard, and even smelled, tasted, or felt. Also try to write down things like other people who were around and might be witnesses, locations where different things happened.

Even if you do not wish to file a police report right away, you may wish to preserve evidence using the above steps in case you later decide to contact police. This can help protect evidence that might assist later in the identification and/or prosecution of the person responsible for the crime. This can also preserve evidence you might want to use during an administrative hearing or civil lawsuit, should you choose either of those options.

Many students worry about reporting crimes to the police because they do not want to testify in a trial. Victims are nevertheless encouraged to at least contact the Las Cruces or the NMSU Police Department(s) so they can be made aware of other supportive services (counseling services, medical treatment, etc.) that might lessen the trauma of the incident. If the victim does not wish to pursue criminal charges, their wishes will be respected. Some of the most frequently accessed services include:

- **SANE Exam:** This is available through the La Piñon Rape Crisis Center and is a medical exam that is designed to identify damage to your body as a result of a sexual assault so it can be treated. In addition, evidence of sexual assault can be identified and collected during this exam. These exams are confidential and are conducted by specially trained medical practitioners. You also have a right to have someone of your choosing with you during these exams. If you would like, a victim services advocate can accompany you and help with any questions you might have.
- **Medical:** In addition to the SANE exam, medical services are available on campus through the NMSU Campus Health Center. In addition, there are three medical centers in Las Cruces, and a large number of urgent care centers and clinics in the area. The medical centers have 24-hour emergency departments, and many of the urgent care centers and clinics have hours that extend into the evenings and on weekends.
- **Protection Orders:** While certain Burrell officials can issue a “no contact” order against students or employees, such orders only apply on campus, and may only be helpful if the perpetrator of the crime is a student or employee. The NMSU Police Department’s Victim Services staff can assist victims of violence in obtaining temporary and permanent restraining orders from the state courts that will apply no matter where you might be, and no matter who the offender is. Victim services units with other police departments offer similar assistance.
- **Victim Services:** This is a unit of the NMSU Police Department, and is staffed with advocates who can assist with connecting to any of the above resources, getting protective orders through the

courts, obtaining emergency food and shelter, etc. As mentioned above, victims do not need to file a police report in order to receive assistance from the Victim Services unit.

Students who are victims of crimes may also pursue the filing of a grievance through the College's Office of Compliance. While this is not a substitute for the criminal justice system, students are afforded the right to have their complaints heard and, if a violation of College policy or College procedure is found, adjudication of the alleged violation. The level of disciplinary actions depends on the circumstances of the case, but could result in administrative withdrawal from the College. Both victims and the accused are afforded due process.

Any Burrell employees who are approached by a person who has been the victim of a sexual assault or other crime on either the Burrell or NMSU campus are required to assist the person in notifying the police department. In no case will any College official discourage reporting of a crime to police when the victim wants to file a report.

### SEXUAL ASSAULT, HARASSMENT, AND STALKING

Burrell specifically prohibits sexual misconduct and, upon receipt of a complaint will provide supportive measures to the reporting party/Complainant and Respondent, when appropriate, to discuss the availability of supportive measures. Examples may include assisting the victim in seeking counseling (available either through the NMSU Counseling Center or through several off-campus organizations), obtaining medical treatment (available through the Campus Health Center and local hospitals), changing room assignments, making academic schedule changes, (if the victim so desires). Students, faculty and staff, and visitors are reminded that they can contact the NMSU Police Department for assistance at any time, and do not have to file an official police report in order to be helped. If a report is filed with the NMSU Police Department, it will be fully investigated with the findings being referred to the District Attorney's Office for prosecutorial decisions. (NOTE: The state statutes related to sexual assault, harassment, stalking, and other crimes can be found in Section 4 of this publication.)

Burrell prohibits sexual misconduct by students and employees. This includes **forced sexual contact** (including harmful, insulting, or non-consensual verbal or physical contact of a sexual nature with another person, such as touching, fondling, exposure, disrobing, etc.) and **forced sexual penetration** (including intercourse, sodomy, oral copulation, or penetration with any object by the use of force, threats, coercion, or by taking advantage of a victim's helplessness). Also prohibited is any sexual harassment, such as requiring a person to engage in sexual conduct or activities in exchange for a grade, payment, or similar benefits.

Burrell requires all employees and students to complete training on an annual basis regarding sexual misconduct. Additional information and training programs beyond this initial training are available through the NMSU Counseling Center, the Burrell Office of Student Affairs, the Title IX Coordinator, and/or the NMSU Police Department.

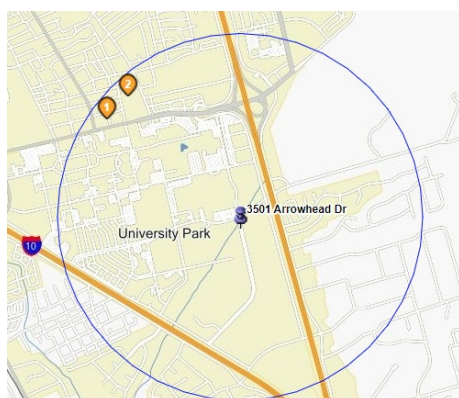
Burrell investigates reported sexual misconduct (including dating violence, domestic violence, sexual assault, and stalking) through the Title IX Coordinator (the disciplinary investigation), as well as through the appropriate law enforcement agencies (the criminal investigation). During Burrell's Title IX investigations, a preponderance of the evidence standard is used. Both the victim and the accused have the right to have an advisor of their choice to accompany them to a Title IX hearing. Title IX investigation findings are provided to a hearing panel/decision maker for adjudication. For students, this can result in any of the following sanctions based on the severity of the offense: expulsion from NMSU housing; mandatory completion of an education program; completion of mandatory counseling; suspension; or dismissal and ban from both the Burrell and NMSU campuses. For employees, the possible sanctions are: documented counseling (for minor offenses); written reprimand; suspension; or termination. More information regarding student misconduct

and hearing procedures can be found at: [https://burrell.edu/students/code\\_ethics/](https://burrell.edu/students/code_ethics/) and <https://burrell.edu/students/title-ix/>.

In an effort to reduce the risk of sexual misconduct as well as the crimes of rape, sexual assault, sexual harassment, stalking, dating violence and domestic violence occurring among its students, the College utilizes a range of training and initiatives to provide awareness, educational, risk reduction and prevention programming. Educational programs are offered to raise awareness for all incoming students and employees, and are conducted during new student and new employee orientation. These programs and others offered throughout the year include strong messages regarding not just awareness, but also primary prevention (including normative messaging, environmental management and bystander intervention), and discuss institutional policies on sexual misconduct as well as the State of New Mexico definitions of domestic violence, sexual assault, stalking and consent in reference to sexual activity. Bystander engagement is encouraged through safe and positive intervention techniques and by empowering third-party intervention and prevention such as calling for help, identifying allies, and/or creating distractions.

### SEX OFFENDERS

In accordance to the Campus Sex Crimes Prevention Act of 2000, the College is providing a link to the State of New Mexico Sex Offender Registry. All sex offenders are required to register in the state of New Mexico and to provide notice of each institution of higher education in New Mexico at which the person is employed, carries a vocation or is a student. The registry is maintained by the State of New Mexico and can be found at <https://communitynotification.com>. In addition to other legal requirements, any convicted sex offender who is a student or employee of NMSU is required to register with the NMSU Police Department, as well as make notification to either the Registrar's Office (if a student) or the department head of their employing department (if an employee), or both (if both a student and an employee). Students and employees of Burrell College are required to complete a background check prior to joining Burrell. Both students and employees are required to report charges or convictions to the appropriate offices. As of September 28, 2023, no known sex offenders lived on the NMSU campus based on a search of this database:



In addition to the above notice to the State of New Mexico, all sex offenders are required to deliver written notice of their status as a sex offender to the NMSU Police Department no later than three (3) business days **prior to** their enrollment in, employment with, volunteering at or residence in the NMSU. Such notification may be disseminated by NMSU to, and for the safety and well-being of, the NMSU community, and may be considered by NMSU/Burrell for enrollment and discipline purposes.

## MEASURES TAKEN BY BURRELL

In the event that sexual misconduct, gender-based violence or the crimes of sexual assault, stalking, dating violence or domestic violence occur, the College takes the matter very seriously. The NMSU Police Department investigates all crimes reported to have taken place on the Burrell and Las Cruces campuses, including crimes involving these categories. However, students can also file (or file in lieu of a criminal report) an administrative report/complaint with the College for incidents involving dating violence, domestic violence, sexual assault, or stalking by contacting the Burrell Compliance Office. When a report comes in regarding dating violence, domestic violence, sexual assault or stalking, it is reviewed to determine if the incident recorded is or could be a violation of Title IX. If a violation of Title IX is possible, the complaint is investigated. An investigation report is written by the investigator(s). The Title IX investigation report will be sent to the parties and their advisors, accompanied by relevant evidence. The parties are provided an opportunity to respond to the report and provide additional evidence. The final report and evidence is then submitted to the parties and a hearing officer and a hearing will be conducted by a hearing officer appointed by the Title IX coordinator. After the hearing, the hearing officer will render a written decision which is delivered to the Title IX coordinator for distribution to the parties. All parties will be informed of the College's appeal processes, and their rights to exercise a request for appeal. Please see the College's Title IX procedures at: <https://burrell.edu/students/title-ix/>.

Upon receipt of a Title IX complaint, the College may employ interim protection measures such as interim suspension and/or uphold no contact orders in any case where a student's or employee's behavior represents a risk of violence, threat, pattern or predation. A student wishing to officially report such an incident to Burrell may do so by contacting the Burrell Office of Compliance/Title IX Coordinator. The student may also report to NMSU Police or other law enforcement if they wish to pursue criminal charges. Burrell employees with knowledge about sexual misconduct or gender-based violence or the crimes of rape, sexual assault, sexual harassment, stalking, dating violence or domestic violence are encouraged to report it immediately. For offenses including sexual misconduct or other gender-based violence, which typically include the crimes of domestic violence, dating violence, sexual harassment, sexual misconduct and stalking, sanctions against student offenders range from warnings through expulsion. Serious and violent incidents and acts of sexual offenses by employees usually result in suspension, expulsion or termination of employment.

Procedurally, if the NMSU Police Department were to receive a report of sexual misconduct, gender-based violence, or other sex or gender discrimination, the Burrell Title IX Coordinator will be notified. If the victim wishes to access local community agencies and/or law enforcement for support, the College will assist the victim in making these contacts. The Title IX Coordinator will offer assistance to victims in the form of supportive measures such as opportunities for academic schedule changes, changes in housing at NMSU, for the victim or the responding student, campus escorts, transportation assistance, and other targeted interventions, etc. If the victim so desires, they will be connected with a counselor on-or off-campus, as well as an on-or off-campus victim's advocate. No victim is required to take advantage of these services and resources, but the College will provide them in the hopes of offering help and support without condition or qualification. A summary of rights, options, support and procedures are provided to all victims, whether they are a student or employee by the Title IX Coordinator (or designee). The Title IX Coordinator will ensure prompt, fair and impartial processes to be initiated upon receipt of a Title IX complaint. The Title IX Coordinator is also responsible to assure that training is conducted annually for all employees and students, as well as Title IX investigators, advisors, and hearing officer(s). The College's Title IX Coordinator is Nina Nunez ([nnunez@burrell.edu](mailto:nnunez@burrell.edu); 575-674-2339).

## SECTION 3 – SAFETY AND SECURITY PROGRAMS

### SAFETY CLASSES AND TRAINING

The NMSU Police Department regularly hosts a variety of programs that are available to members of the university community. These are scheduled by the Police Department and announced through social media ([www.facebook.com/nmsupolice](http://www.facebook.com/nmsupolice)) and e-mails. Anyone interested in these programs can visit <https://www.nmsupolice.com/safety/programs.html>, or call (575) 646-3311 and ask to be put in contact with the coordinator of whichever program they are interested in attending.

- Personal Self Defense and Jane Jitsu: learn and practice prevention, awareness, and escape techniques in these programs (FREQUENCY: Offered at least once each month on average. LENGTH: 4 hours or two, 2-hour sessions.)
- Defense Against Weapons: learn how to defend against an armed assailant during an attempted sexual assault. (FREQUENCY: Offered at least once each semester. LENGTH: 2 hours.)
- Pepper Spray: learn to use pepper sprays for self-defense (FREQUENCY: Offered at least once each semester. LENGTH: 1 hour.)
- Active Shooter/Killer Response: learn what to do if caught in an active shooter/killer incident, as well as any major emergency (FREQUENCY: Offered at least three times each semester. LENGTH: 90 minutes, with 1-hour and 2-hour versions available on demand.)
- Alcohol and Drug Awareness: learn facts about alcohol and drug issues students commonly encounter, and common signs and symptoms of abuse. (FREQUENCY: Offered at least once each semester. LENGTH: 1 hour.)
- Stop The Bleed: learn the national standard for stopping major bleeding in an emergency, including how to recognize it, how to get help, direct pressure, wound packing, and use of tourniquets. (FREQUENCY: Offered at least once each semester. LENGTH: 30 minutes.)

Classes are scheduled at the request of any on-campus (and some off-campus) groups or organizations. In addition, the Police Department works with others on campus, such as Housing and Residence Life, to design specific public education workshops for the needs of each area. Further information, including a list of currently scheduled courses, how to request a course, descriptions of the courses, or discussion of specific needs is available by contacting the NMSU Police Department at 646-3311. Additional information regarding safety can also be found at [www.nmsupolice.com](http://www.nmsupolice.com) and <https://safety.nmsu.edu/>, as well as <https://burrell.edu/campus-safety-and-security/>.

### NEW STUDENT ORIENTATION

The Burrell Office of Student Affairs presents information regarding the Student Code of Professional Conduct and Burrell's Office of Compliance provides information regarding Title IX during new student orientation. This includes procedures regarding victim reporting, reporting offices and confidentiality, steps to take in crime violence cases, and bystander behavior.

All Burrell students and employees must complete an online Title IX training. A component of the online training is information related to defining dating violence, domestic violence, sexual assault, stalking and consent; rights of the victim; where a victim can report on campus providing an explanation of reporting offices and offices which hold confidentiality; steps to take in case of a crime of violence; and bystander behavior. Students also have online training regarding discrimination awareness and alcohol and drug awareness.

## DRUG FREE SCHOOLS AND COMMUNITIES

Burrell strongly discourages any conduct that is illegal or that violates the rights of another individual. This specifically includes laws concerning possession, use, and sale of alcohol and illegal drugs. The College maintains a Drug Free Schools and Communities Act policy: <https://burrell.edu/policy-b5050/>. Information regarding the College's substance abuse policies, alcohol and drug use laws, health risks of alcohol and other drugs, and resources are available on the College's website: <https://burrell.edu/students/drug-and-alcohol-free-campus/>.

Anyone selling or distributing alcohol to a minor or selling or distributing illicit drugs is guilty of a felony in New Mexico. Any student who violates Burrell policies, including state and federal laws, may be subject to disciplinary action by the College. Violations of federal and state-controlled substance and liquor laws are investigated by the NMSU Police Department.

The NMSU Office of Health Promotion (OPH) is a risk reduction and prevention program that educates issues of personal safety and well-being that is promoted by the Burrell Office of Student Affairs for Burrell students to utilize. NMSU OPH has staff and peer educators who provide students with information and strategies regarding topics related to personal health, safety, and overall well-being.

- 1) **RAINN Day** - an annual day of action to raise awareness and educate students about sexual violence on college campuses. It is a grassroots program designed to empower college students to educate their peers about risk reduction and recovery resources on their campus.
- 2) **Stand Up Speak Out**- bystander intervention training is provided approximately 10 times annually to student groups, programs, residential life, and includes student leaders.
- 3) **Safe Spring Break**-This is an annual event and includes topics such as: sexual assault/awareness, violence prevention, and sexual/personal safety.
- 4) **Consent Program**- Is a social media and condom distribution event that provides information on what consent is and sexual safety. This program was conducted monthly in all residence halls and as requested by student organizations and groups.

## NMSU RESIDENCE HALL SAFETY AND SECURITY PROGRAMS

### **Residence Life On-Call System**

For Burrell students who utilize NMSU's housing, the NMSU Housing and Residential Life department has a comprehensive on-call duty rotation at both the student staff member (Resident Assistant) and professional staff member (Resident Director) level. These staff are "on-call" to respond to personal crisis, major facilities issues, or medical emergencies. After business hours (5pm-8am the following morning), a student staff member is on duty for each residential facility via a university-owned cellular phone.

The professional Resident Director on duty is responsible for all housing complexes and available 24/7, not just during the after-hours time period. This professional staff member is supported by a member of the Housing Leadership Team (Director or Associate Directors) who is available 24/7 to consult with the professional staff member that is available on campus. Professional staff members are on-call, even when the university is closed and/or on recognized holidays.

As a part of the Resident Assistant duty protocol, staff complete a nightly inspection of all exterior doors to each building to ensure that they are securing and functioning properly, additionally, Housing has administrative staff who complete a weekly check of these doors to ensure all exterior gates and doors are latching and closing appropriately.

In addition to exterior door inspections, each evening NMSU staff complete a visual walk through of all housing spaces and have created a process to report all non-function exterior lighting. This includes frequent rounds each month at Student Family Housing for reporting yard and streetlights not working.

### **Public Safety Aides (PSAs)**

In collaboration with the NMSU Police department, student Public Safety Aides (trained security officers) patrol all housing areas, Corbett Center Student Union (CCSU), and adjacent parking lots on Wednesdays, Thursdays, Fridays, and Saturdays from 10 pm to 3 am. Housing and Residential Life and CCSU initiated this safety program in late 2015 and are paying for it to reduce the number of issues, including false fire alarm pulls. This has helped to significantly reduce problems and has helped assist students who had health emergencies during this time period. Overall, the program has been a terrific initiative to benefit student health, safety, and security.

### **Housing Health & Safety Checks**

Housing staff conduct health and safety checks at all facilities in the Housing inventory five times each year: late September (pre-Homecoming); November; winter Break (December); February; and, April. While this is an ideal time to connect with residents, assist with work order issues and check on the condition of the space, Housing staff also specifically look at areas that relate to safety:

- check and ensure all window locks are in place and functioning
- check and ensure all exterior door locks to space are functioning
- check and ensure all smoke detectors are in place and operating correctly

### **Additional Housing Safety and Security Measures**

All exterior gates and doors contain signage about the seriousness of not propping doors, and that community safety is something where all residents/community members bear responsibility. Housing and Residential Life also conducts a monthly check of all exterior gates and doors to ensure educational signs are in place.

Additionally, Residential Life staff at each of the Operations Centers complete daily checks of all spare key cabinets, and twice per week a complete inventory of all key cabinets is conducted to identify and address any spare keys that have been checked out more than 24 hours and get those returned by residents. Housing and Residential Life also complies with the NMSU Fire Chief Compliance Statement and schedule for testing and inspection of Fire Alarm and Fire Suppression equipment across the NMSU System. This testing currently includes biannual testing of fire alarm systems in large residential buildings. This is supplemented with practice fire drills each Fall in all residential areas.

### **BURRELL PHYSICAL AND BEHAVIORAL HEALTH SERVICES**

Burrell offers, physical health care services in collaboration with the NMSU Aggie Health and Wellness Center as well as other entities. Burrell students can utilize the NMSU Aggie Health and Wellness Center for non-emergency medical needs. The center has full-time providers, and offers x-ray, laboratory and pharmacy services for students. Burrell also contracts with *TimelyCare*, a student assistance program which provides students with physical and behavioral telehealth appointments. A complete list of resources and services with contact information can be found on the Burrell Student Affairs webpage at <https://burrell.edu/students/health-services/>.

On campus resources include: the Burrell Office of Student Affairs, the NMSU Campus Health Center, Burrell Office of Compliance, NMSU Housing & Residential Life Office; NMSU Pete's Pick Up', NMSU Police Department, and NMSU Office of Health Promotion. Community resources include: La Casa Domestic Violence Shelter, La Piñon Rape Crisis Center, Las Cruces Police Department, Memorial Medical Center,

Mountain View Regional Medical Center and the Doña Ana County Sheriff's Office's Victim Assistance Unit. Any victim is provided phone numbers and addresses of these services and is offered assistance with reaching these services. Students on rotation at Regional Academic Centers can find specific regional resources on our website: <https://burrell.edu/students/health-services/>.

### TIPS TO PREVENT CRIME

The following are some things each person can do to reduce chances of becoming a victim of a crime:

- Mark or engrave all valuables (including textbooks) and keep a record of these in a safe place. Include their make, model, and serial numbers whenever possible.
- If there are problems with your room that may affect security (such as doors that don't lock well or windows that open easily), let your NMSU RA or property manager know immediately.
- Register your bicycle with the NMSU Police Department and always secure it to a bike rack on campus with a quality lock.
- Lock the doors and windows to your room and your vehicle every time you leave. Do not leave valuables where they can be easily seen by someone passing by, even if it is just for a few minutes.
- Always be aware of your surroundings and of any strangers near you. If you are going to be involved in activities where you are unable to focus on your environment and what is going on around you (e.g., when playing games on a smart phone), do so with friends so you can help each other watch for dangerous situations. If someone is acting suspiciously near you, move away toward large groups and well-lit areas. If the person follows you and/or continues to act in a suspicious manner, consider challenging them or call 911 for assistance.
- Don't leave valuables unattended in unlocked lockers, study areas, or classrooms.
- Alcohol and drug use can reduce your ability to recognize a dangerous situation and your ability to defend yourself. If you are going to drink alcohol, do it legally, responsibly, in a safe place, and with people you can trust.

In addition to the tips above, additional information can be found on the NMSU Police Department website ([www.nmsupolice.com](http://www.nmsupolice.com)), or by contacting the Crime Prevention Office at 575-646-3311.

### OTHER SERVICES AVAILABLE

Students seeking counseling services within the Las Cruces region or within the other Regional Academic Centers may contact the Burrell Office of Student Affairs or their Burrell Regional Academic Coordinator for more information. The Burrell Office of Student Affairs can assist students with contacting the La Piñon Rape Crisis Center, La Casa Shelter, Doña Ana Victims' Assistance, and numerous other public and private counseling services. Many of these are free of charge or are offered on a sliding fee scale.

For education about sexual assault, misconduct, and/or victims' assistance issues, Burrell students should contact the Title IX Coordinator or the Burrell Office of Student Affairs. Burrell and NMSU work specifically toward the goal of reducing the incidence of sexual crimes and providing better services for those victimized. Special assistance for victims in changing academic and living arrangements are available through Burrell's Office of Student Affairs.

Additional services exist throughout the community to deal with specific issues or problems. Students may contact Burrell's Office of Student Affairs for referral to the appropriate individuals or organizations.

## SECTION 4 – CRIME STATISTICS

### CRIME STATISTICS FROM JANUARY 1<sup>ST</sup> 2022 TO DECEMBER 31<sup>ST</sup> 2022

The NMSU Police Department is responsible for the investigation of all crimes that take place on university premises which includes the Burrell campus. The NMSU Police Department is responsible for the filing of appropriate police reports, annual reports and statistics. However, other agencies have concurrent jurisdiction in many cases. The NMSU Police Department takes efforts to encourage any other agency taking a report to notify the university so the incident can be reflected in the annual crime reports. Burrell also works with the law enforcement agencies for its non-campus locations to obtain statistics for reporting.

Burrell and NMSU Police will only consider removing a report as “unfounded” if the person who filed the report makes a written statement acknowledging that the initial report was fictitious, or if a court convicts the person for filing a false report. In all other circumstances, a report will still be included on crime statistics regardless of the result of hearings or trials.

Statistics on the following crimes and offenses are reported in the annual security report:

**Criminal Homicide:** Murder, non-negligent, and negligent manslaughter. Murder/non-negligent manslaughter is the willful (non-negligent) killing of one human being by another. Negligent manslaughter is the killing of another person through gross negligence.

**Sex Offenses, Forcible or Non-forcible:** A forcible sex offense is any sexual act directed against another person, forcibly and/or against that person's will; or not forcibly or against that person's will where the victim is incapable of giving consent. Non-forcible sex offenses are acts of unlawful, non-forcible sexual intercourse. While the crimes of rape, incest, and statutory rape have been included in this area for many years, changes in the definitions used in the Clery Act now that went into effect on March 1, 2014 now also include fondling.

**Domestic Violence and Dating Violence:** Starting with statistics for 2018, these categories have been added to this report. However, they were already tracked for many years prior pursuant to state law. It is important to note that “dating violence” is considered domestic violence under state law, and is prosecuted as such. However, for purposes of this report, effort has been made to distinguish between these two categories in accordance with the federal definitions.

**Stalking:** Engaging in a pattern of conduct directed at a specific person and that would cause a reasonable person to be in fear of their own or another's safety, or that would create substantial emotional distress. Harassment that continues to occur might become stalking.

**Robbery:** The taking, or attempting to take anything of value from the care, custody or control of a person or persons by force or threat of force or violence and/or by putting the victim in fear.

**Aggravated Assault:** The unlawful attack by one person upon another for the purpose of inflicting severe or aggravated bodily injury. This offense is usually accompanied by the use of a weapon or by means likely to produce death or great bodily harm.

**Burglary:** The unlawful entry of a structure with the intent to commit a felony or theft.

**Arson:** Willful or malicious burning or attempt to burn with or without intent to defraud a dwelling house, public building, motor vehicle or aircraft, or personal property of another, etc.

**Motor Vehicle Theft:** The theft or attempted theft of a motor vehicle. There are three classes of motor vehicles: (1) autos, (2) trucks and buses, (3) and other vehicles.

**On-campus Arrests for Alcohol, Drug and Illegal Weapon Violations:** These represent arrests or formal charges by police related to either alcohol, illicit drugs, or illegal weapons on campus.

**Referrals for Campus Disciplinary Actions for alcohol, drug or illegal weapon violations:** These statistics are individuals referred for disciplinary proceedings in the Dean of Students Office or Residence Life & Student Housing. These individuals may also be counted in the On-campus Arrests category, as individuals are often both prosecuted criminally as well as referred for disciplinary proceedings.

**Hate Crimes:** Hate crimes are reported by category of prejudice: race, religion, gender, gender identity, sexual orientation, ethnicity, national origin or disability. The hate crimes include the following offenses: murder, rape, larceny/theft, assault, intimidation, property destruction, damage or vandalism.

### DEFINITIONS OF CLERY ACT LOCATIONS (General)

**“On-Campus”** is defined as any building or property owned or controlled by an institution within the same reasonably contiguous geographic area and used by the institution in direct support of, or in a manner related to, the institution’s educational purposes, including residence halls. This also includes any building or property that is within or reasonably contiguous to the geographic area that is owned by the institution but controlled by another person, is frequently used by students, and supports institutional purposes (such as a food or other retail vendor).

- **Dorms/Residential Facilities** for students on campus is a **subset** of the **“On-Campus”** category.
- Crimes reported in the Residential Facilities column are also included in the On-Campus Category.

**“Non-Campus”** is defined as any building or property owned or controlled by an institution that is used in direct support of, or in relation to, the institution’s educational purposes, is frequently used by students, and is not within the same reasonably contiguous geographic area of the institution. This also includes any building or property owned or controlled by a student organization that is officially recognized by the institution.

**“Public Property”** is defined as all public property, including thoroughfares, streets, sidewalks, and parking facilities, that is within the campus, or immediately adjacent to and accessible from the campus.

### CLERY GEOGRAPHY

Burrell is located on NMSU property and therefore distributes combined statistics with the NMSU Las Cruces Campus geographies. Burrell has ten non-campus locations that are also reported in the statistics. The statistics only cover crimes committed at the following locations:

**Burrell College of Osteopathic Medicine:** Located at 3501 and 3503 Arrowhead Drive, Burrell is a private and free-standing college located on the New Mexico State University campus.

**New Mexico State University - Las Cruces Campus:** The land located south of University Avenue, between Interstate 10 and Interstate 25, forming a triangle between the three (as the Interstates join on the southern boundary), excluding the Las Cruces Convention Center. Also included is the land owned by NMSU that extends west from Interstate 25 and south of University Avenue/Dripping Springs Road, reaching up the

western face of “A” Mountain, and extending south for a little over a mile just past the intersection of Tellbrook Road and Sonoma Ranch Boulevard.

**NMSU Las Cruces Campus - Doña Ana Community College – Espina Campus:** Originally called the DACC “central campus”, this is located on the Las Cruces Campus, on the southwest side of the intersection of Gregg Street (which forms the north border) and Espina Street (forming the east border). It is bordered on the south by Wells Street, and on the west by Sam Steel Way.

**NMSU Las Cruces Campus - Fabian Garcia Horticulture Center:** This land is located immediately west of Interstate 10, straddling University Avenue. Most of this area is not fenced, but only crimes taking place within the university property are included in this report.

**NMSU Las Cruces Campus - Horse Farm:** Located on Union Avenue, this land consists of completely fenced pastures and paddocks, as well as some equipment barns, a horse barn, and a landscaped approach immediately adjacent to the street. Only crimes located south of Union Avenue and within the described area are included in this report.

**NMSU Las Cruces Campus - Leyendecker Research Facility:** This research property is located on the east side of the Rio Grande River, south of the Town of Mesilla.

**NMSU Las Cruces Campus - Chihuahuan Desert Rangeland Research Center (CDRRC):** This is a large, working research ranch located north of Las Cruces, and partially straddling the Doña Ana Mountains on the southern side, and extending to the Rio Grande River on the west and Jornada Experimental Station operated by the USDA on the east. Interstate 25, a rest area, and a US Border Patrol Checkpoint are located in a corridor running north/south through the CDRRC, but are not part of the NMSU land nor are they included in this report.

**Non-Campus: Burrell College of Osteopathic Medicine Research Laboratories** located at 9035 Advancement Avenue, Las Cruces, NM. Consists of three separate laboratory areas in two buildings leased for use by students and faculty engaged in research.

**Non-Campus: Vegas Village Apartments** located at 720 Mills Avenue in Las Vegas, New Mexico is not owned by Burrell; it is a student housing option for students while at their clinical rotations in Las Vegas, New Mexico.

**Non-Campus: Executive Rentals/Donovan Health** located at 1514 N Carlton Ave and 1601 A. East 20th St in Farmington, New Mexico is not owned by Burrell; both units are student housing options for students while at their clinical rotations in Farmington, New Mexico.

**Non-Campus: Eastern New Mexico Medical Center Medical Office Building 2** located at 350 West Country Club Road, Roswell, New Mexico is not owned by Burrell; it is leased in a timeshare agreement for exclusive use.

**Non-Campus: Taos Getaway, LLC** located at 226 Kit Carson Rd in Taos, New Mexico is not owned by Burrell; it is a student housing option for students while at their clinical rotations in Taos, New Mexico.

**Non-Campus: Taos Getaway, LLC** located at 8 Cresta de la Luna in El Prado, New Mexico is not owned by Burrell; it is a student housing option for students while at their clinical rotations in El Prado, New Mexico.

**Non-Campus: Pinal Mountain Country Inn** located at 1244 South Jesse Hayes Road in Globe, Arizona is not owned by Burrell; it is a student housing option for students while at their clinical rotations in Globe, Arizona.

**Non-Campus: Albuquerque Center** located at 4700 Lincoln Road, Suite 104 in Albuquerque, New Mexico. This location is leased by Burrell for student use while in Albuquerque at clinical rotations.

**Non-Campus: El Paso Center** located at 1700 E. Cliff Dr. Suite 100 in El Paso, Texas. This location is leased by Burrell for student testing and meetings while attending clinical rotations in El Paso.

CRIME STATISTICS: 2020, 2021, 2022

	Offense	Year	On-Campus Property	**Residential Facilities	On-Campus Total	Non-Campus Property	Public Property
Murder	Murder/Non-Negligent Manslaughter	2022	0	0	0	0	0
		2021	0	0	0	0	0
		2020	0	0	0	0	0
	Negligent Manslaughter	2022	0	0	0	0	0
		2021	0	0	0	0	0
		2020	0	0	0	0	0
Sexual Assault/ Sex Offenses	Rape	2022	7	5	7	0	0
		2021	2	2	2	0	0
		2020	4	3	4	0	0
	Statutory Rape	2022	0	0	0	0	0
		2021	0	0	0	0	0
		2020	0	0	0	0	0
	Fondling	2022	2	1	2	0	0
		2021	3	2	3	0	0
		2020	2	2	2	0	0
	Incest	2022	0	0	0	0	0
		2021	0	0	0	0	0
		2020	0	0	0	0	0
VAWA Crimes	Domestic Violence	2022	2	1	2	0	0
		2021	6	5	6	0	0
		2020	8	4	8	0	0
	*Dating Violence	2022	*	*	*	*	*
		2021	*	*	*	*	*
		2020	*	*	*	*	*
	Stalking	2022	4	0	4	0	0
		2021	2	1	2	0	0
		2020	4	2	4	0	0
Other Clery Reportable Crimes	Robbery	2022	2	0	2	1	0
		2021	2	0	2	2	0
		2020	0	0	0	0	0
	Aggravated Assault	2022	1	0	1	1	1
		2021	1	0	1	0	0
		2020	0	0	0	0	0
	Burglary	2022	64	10	64	2	0
		2021	27	17	27	0	0
		2020	37	12	37	0	0
	Motor Vehicle Theft	2022	14	0	14	5	0
		2021	4	0	4	1	0
		2020	2	0	2	0	0
	Arson	2022	0	0	0	0	0
		2021	0	0	0	0	0
		2020	1	0	1	0	0

\* Pursuant to the 34 CFR 668.46(a) Definitions, and the Federal Register, Volume 79, No. 202, page 62757, Column 3, NMSU includes all cases of 'dating violence' in the statistics for 'domestic violence', as New Mexico State Statutes already include dating violence in domestic violence violations and prosecutions. As a result, there are no cases of 'dating violence' listed individually.

\*\* The NMSU controlled residential facilities are all located on campus, so the incidents taking place therein are also included in the "On-Campus Property" column.

	Type	Year	On-Campus Property	**Residential Facilities	On-Campus Total	Non-Campus Property	Public Property
ARRESTS	Weapons: Carrying, Possession, Etc.	2022	1	0	1	0	0
		2021	0	0	0	0	0
		2020	1	1	1	0	1
	Drug Abuse Violations	2022	15	6	15	0	3
		2021	11	7	11	0	0
		2020	47	9	47	0	7
	Liquor Law Violations	2022	12	7	12	0	1
		2021	11	6	11	0	0
		2020	43	28	43	0	16
REFERRALS	Weapons: Carrying, Possession, Etc.	2022	0	0	0	0	0
		2021	2	2	2	1	0
		2020	5	1	5	0	0
	Drug Abuse Violations	2022	19	17	19	1	0
		2021	0	0	0	0	0
		2020	2	1	2	0	0
	Liquor Law Violations	2022	67	60	67	1	0
		2021	108	106	108	0	0
		2020	28	28	28	5	0

\*\*The NMSU controlled residential facilities are all located on campus, so the incidents taking place therein are also included in the "On-Campus Property" column.

Hate Crimes	
2022	1
2021	0
2020	0

There were no Clery-reportable crimes and no referrals reported for Burrell's Campus (3501 and 3503 Arrowhead Dr. Las Cruces, NM) or Non-Campus locations as identified in the Clery Geography section of this report.

### CRIME LOG/BLOTTER AND INCIDENT REPORTS

The NMSU Police Department, Albuquerque (NM) Police Department, Las Cruces (NM) Police Department, Roswell (NM) Police Department, Las Vegas (NM) Police Department, Farmington (NM) Police Department, Taos Police Department, El Prado (NM) Police Department, El Paso (TX) Police Department, and Globe (AZ) Police Department comply with New Mexico's Inspection of Public Records Act. The records can be viewed during normal business hours (Monday through Friday, 8 am – 5 pm, excluding holidays or posted closures) at the Police Department Records Office. These should not be considered official police reports for purposes of insurance or prosecution. Anyone needing official, stamped police reports must purchase them from the Records and Evidence Offices of the law enforcement agencies.

### TRACKING CRIME INCIDENTS AND REPORTS

The NMSU Police Department maintains a daily crime log which is available for inspection. People interested in the activities of the NMSU Police Department can find regular news reports on local radio and television stations, as well as articles in the local newspapers. The NMSU Police Department experiences a high degree

of cooperation from the local news media and issues press releases on cases believed to be of public interest. Police Departments also submit their crime statistics to the U.S. Department of Justice's Uniform Crime Reports.

### OFF-CAMPUS CRIME

Crime occurring off campus involving students is reported to and handled by a variety of agencies, including the Las Cruces Police Department, the Doña Ana County Sheriff's Department, or other local, state, or federal law enforcement agencies having jurisdiction (Las Vegas Police Department, Roswell Police Department, Globe Police Department, Albuquerque Police Department, Farmington Police Department, Taos Police Department, El Prado Police Department, Las Cruces Police Department, and El Paso Police Department). While the NMSU Police Department assists other agencies when asked, pursuant to mutual aid agreements, the reporting and tracking of crime is done by the agency of primary jurisdiction. Burrell nor NMSU monitors or tracks incidents that are on private property or public property not owned or controlled by Burrell or NMSU. Anyone wanting specific information on off-campus crime should contact the appropriate agency(s). See the Phone Number Reference Guide on the last page of this report for contact information.

### WE NEED YOUR HELP – REPORT CRIME!

Please help us in deterring crime on our campus by promptly notifying Burrell security at 575-674-2266 or by calling the NMSU Police Department at 575-646-3311 or 911 (in case of emergencies) to report suspicious activity, safety problems, or crimes. In accordance with state law, the NMSU Police Department cannot accept anonymous reports, and must disclose certain information to prosecutors and defense counsel. However, it will take steps in sensitive cases to keep personal information confidential to the extent possible. This includes cases of sexual assault, as well as cases where there is a concern of possible retaliation. The NMSU Police Department also encourages 3<sup>rd</sup> party reports from non-NMSU counselors, pastors, and other mental health practitioners and anyone a Burrell who may hold these roles.

### RESPONSIBILITY FOR POLICY MONITORING AND ENFORCEMENT

Burrell has assigned responsibility for monitoring safety and security policies to the appropriate offices and agencies. If violations of policy are found to have occurred, the violations are referred to the appropriate offices for enforcement.

### OTHER DEFINITIONS

The following are additional terms that are used in various places in this Report.

**Awareness Program:** An educational program delivered either in person or online that makes a person familiar with material surrounding a particular topic (in this case, sexual assault, domestic violence, dating violence, and stalking); should be culturally relevant and inclusive of all individuals and groups.

**Bystander Intervention:** Measures that can be taken by someone (other than the victim) to interrupt or discourage the actions of another that might be leading toward sexual assault, domestic violence, dating violence, or stalking; the measures may, but do not necessarily need to, include calling 911.

**Consent:** Knowingly and willingly agreeing to something; affirmative consent where a person specifically communicates that they agree is ideal; lack of an objection by a person does not mean they are consenting, as they might not be objecting due to fear, threat, or lack of comprehension.

**Ongoing Prevention and Awareness Campaign:** A regular program that includes both the information provided during initial awareness training, as well as additional or expanded information to further understanding; intended to assist people in avoiding or preventing an incident from taking place.

**Primary Prevention Program:** One designed to keep something (e.g., injury or assault) from ever occurring in the first place; often includes education and a prohibition on undesirable conduct.

**Proceeding:** As used herein, refers to Burrell administrative disciplinary process, to include hearings and appeals, unless otherwise indicated.

**Result:** As used herein, the findings, and any resulting sanctions issued, as a result of NMSU administrative disciplinary process, to include hearings and appeals, unless otherwise indicated.

**Risk Reduction:** Precautionary measures that may be taken by an individual or a group in order to lessen the chance of an incident, injury, or violence.

## SECTION 5 - REFERENCE GUIDE

### ON-CAMPUS RESOURCE DIRECTORY

NMSU Police Department	<b>EMERGENCY ..... 911</b>
	Non-emergency ..... 575-646-3311
NMSU Fire Department	Non-emergency ..... 575-646-2519
Burrell Security.....	575-674-2299
Burrell Associate VP for Administration .....	575-674-2391
Burrell Executive Director of Student Affairs.....	575-674-2225
Burrell Associate VP of Institutional Effectiveness.....	575-674-2339
Burrell Title IX Coordinator.....	575-674-2339
NMSU Campus Health Center .....	575-646-1512
NMSU Department of Housing and Residence Life .....	575-646-3202
WAVE Program .....	575-646-2813
Crimson Cab.....	575-888-7777
ASNMSU Pete’s Pickup (Safe Walk Service) .....	575-646-1111
La Piñon Rape Crisis Center .....	575-526-3427
La Casa Domestic Violence Shelter .....	575-526-2819
Domestic Violence Hotline .....	800-376-2272

### OFF-CAMPUS LAW ENFORCEMENT AGENCIES

Doña Ana County non-emergency Dispatch.....	575-526-0795
Las Cruces Police Department.....	575-528-4200
Doña Ana County Sheriff’s Office.....	575-525-1911
Mesilla Marshal’s Office.....	575-525-8220
Sunland Park Police Department.....	575-589-6600
Las Vegas Police Department.....	505-425-7504
Roswell Police Department.....	575-624-6770
Taos Police Department.....	505-758-2216
Taos County Sheriff’s Department.....	575-737-6480
Farmington Police Department.....	505-599-1053
Globe Police Department.....	928-425-5751
Albuquerque Police Department.....	505-764-3288
Espanola Police Department.....	505-747-6002
El Paso Police Department.....	915-212-8100
New Mexico State Police.....	575-382-2500

Federal Bureau of Investigation.....	575-526-2351
Drug Enforcement Administration.....	575-526-0700
US Marshals Service.....	575-527-6850
US Customs and Border Protection.....	575-528-6600

APPENDIX – MAPS OF CAMPUS LOCATIONS  
BURRELL COLLEGE OF OSTEOPATHIC MEDICINE



NMSU LAS CRUCES CAMPUS – MAIN TRIANGLE AND DACC ESPINA CAMPUS



NMSU LAS CRUCES CAMPUS – EAST CAMPUS

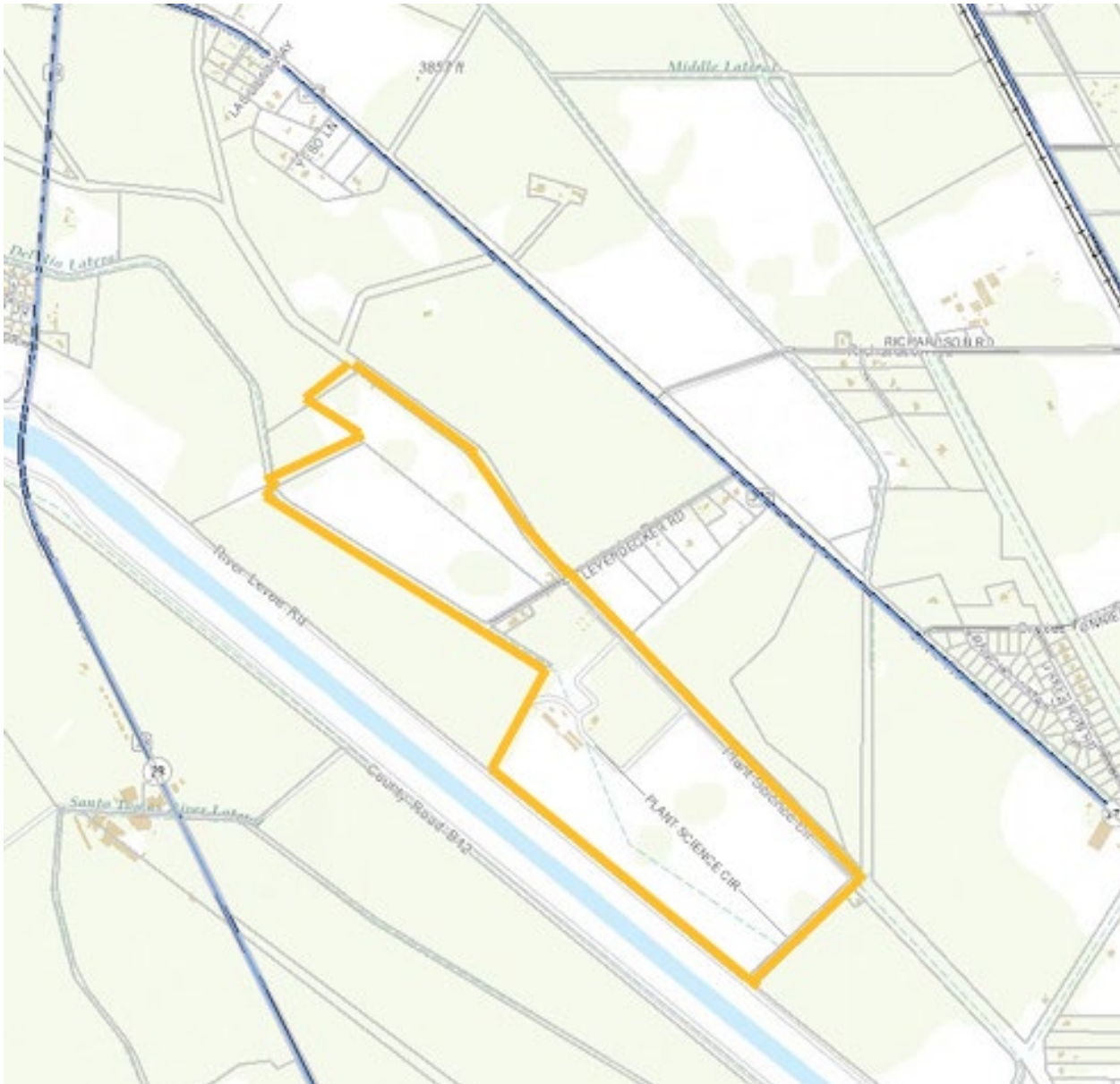




NMSU LAS CRUCES CAMPUS – HORSE FARM



## LEYENDECKER RESEARCH FACILITY



## CDRRC – SECTIONS AND BOUNDARIES



## CDRRC – NEIGHBORING PARCELS

